

# INNOVATION

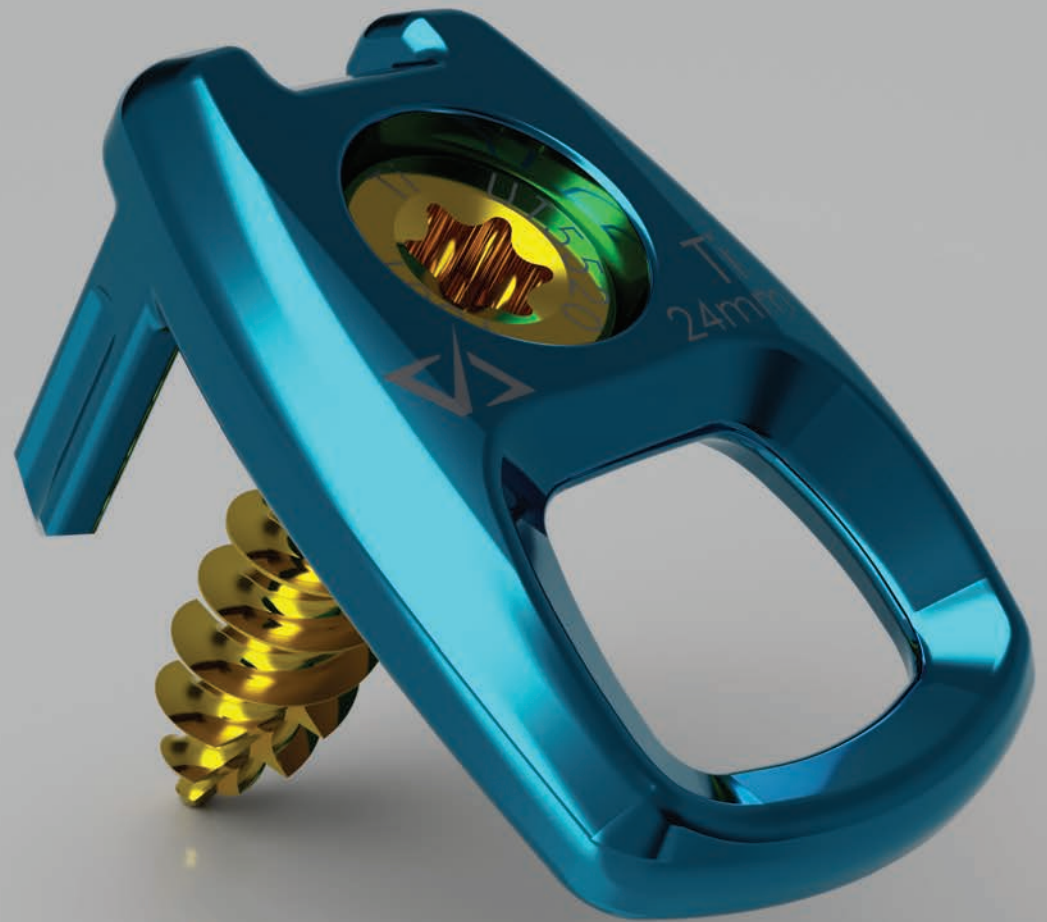
INNOVATE / INVOLVE / INVENT

## ▶ DETAILS

The Kestrel® Buttress Plate System is an anterolateral vertebral fusion plate designed to resist migration or expulsion of interbody fusion devices.

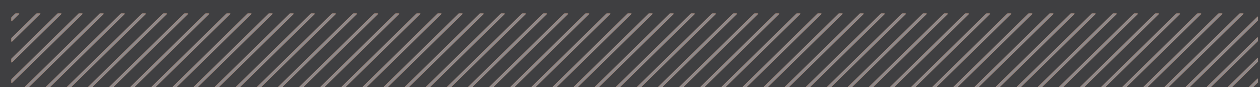
The plate features a bi-convex profile to match patient anatomy, large graft viewing window, and integrated fixation spikes to prevent rotation.

**KESTREL**  
BUTTRESS PLATE SYSTEM



## ▶ SPECIFICATIONS

Footprint (mm)	Screws (mm)
17W x 20L	5.5mm x 20mm
17W x 24L	5.5mm x 25mm
17W x 28L	5.5mm x 30mm
	6.5mm x 20mm



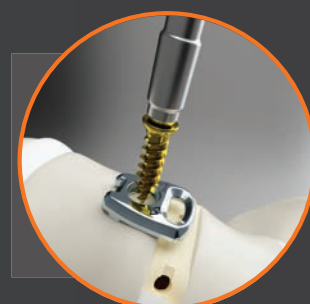
13° Conical variability

8° Pre-lordosed with up to 25° of contouring

Dual anti-rotation spikes

Large graft viewing window

20° Additional sagittal screw insertion angle



# KESTREL

