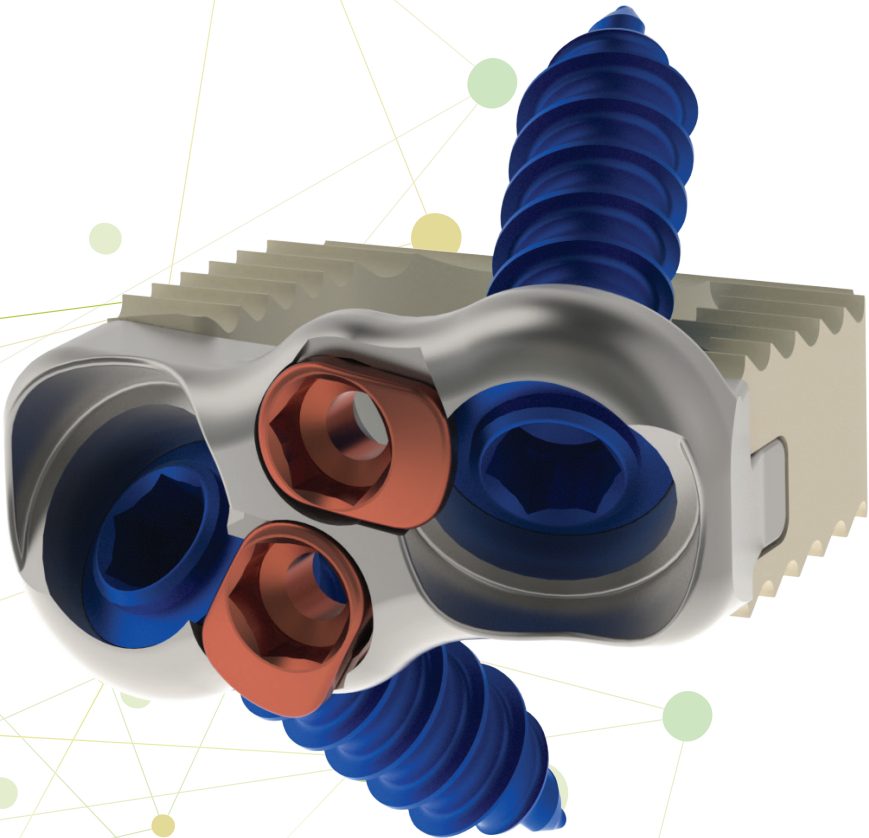


CERES[®]-C

STAND-ALONE INTERBODY

FEATURES AND BENEFITS

CERVICAL
INTERBODY
DEVICES



Amendia is now



AMENDIA
creating balanced solutions

An All-in-One Cervical Powerhouse.

The Ceres®-C Stand-Alone Cervical Interbody is a low-profile device with a robust titanium/PEEK body ideal for anterior cervical interbody fusions. Dual cam locks featured in the titanium plate prevent screw backout. Both the biased screw angles and provided fixed and variable screws allow for either a rigid or dynamic construct. Multiple size ranges and lordotic options are available for achieving optimal surgical placement.

The Ceres®-C Stand-Alone Cervical Interbody features:

- PEEK interbody spacer with titanium plate and screws
- Dual cam anti-backout locking mechanism
- Same 2.5mm hex driver used for screws and cam locks

Plates:

Part Number: 08-170-XX

XX - Plate Height

- Ti-6Al-4V ELI construction (plates, screws, and cam locks)
- Independent manual locking mechanism for each screw hole
- Heights: 6-12mm
- Plate Thickness: 2.3mm
- Max Plate Width: 17.2mm

PEEK Spacer:

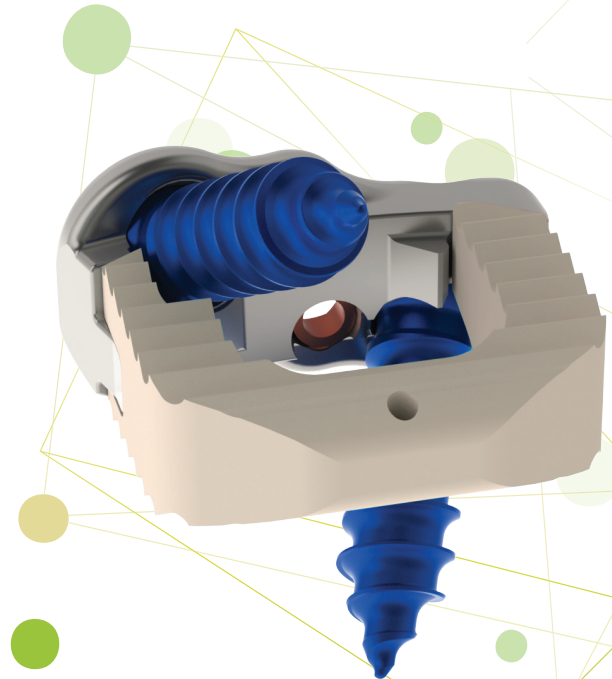
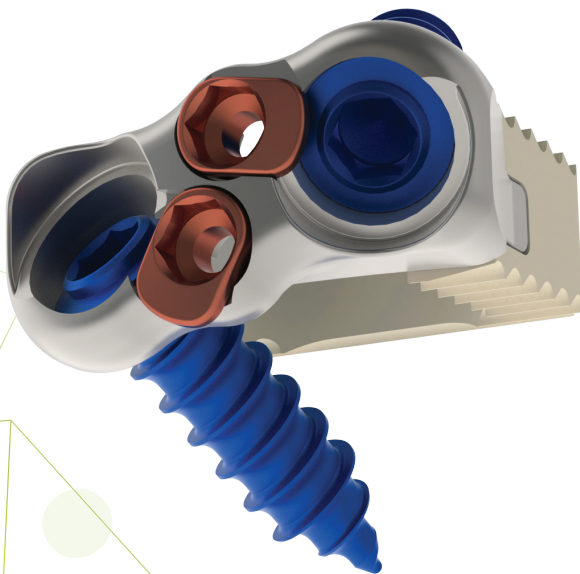
Part Number: 08-170-XXYY

XX - Lordotic Angle, YY - Spacer Height

- PEEK construction
- Footprint: 12mm L x 15mm W
- Heights: 6-12mm
- Lordosis: 6° & 10°
- 1 tantalum marker 1.0mm from posterior edge
- Graft volume: 0.3-0.8cc

Screws:

- Ø4.0mm standard and Ø4.5mm rescue screws
- Available in variable, fixed, self-drilling (sharp tip) and self-tapping (blunt tip)
- Lengths: 12mm, 14mm, & 16mm
- Bias screw angles of 15° medial-lateral and 30° cephalad-caudal
- 20° of total variable screw angulation, 10° per side



AMENDIA

For more information or to place an order call 877-755-3329,
email accountservices@amendia.com or visit amendia.com