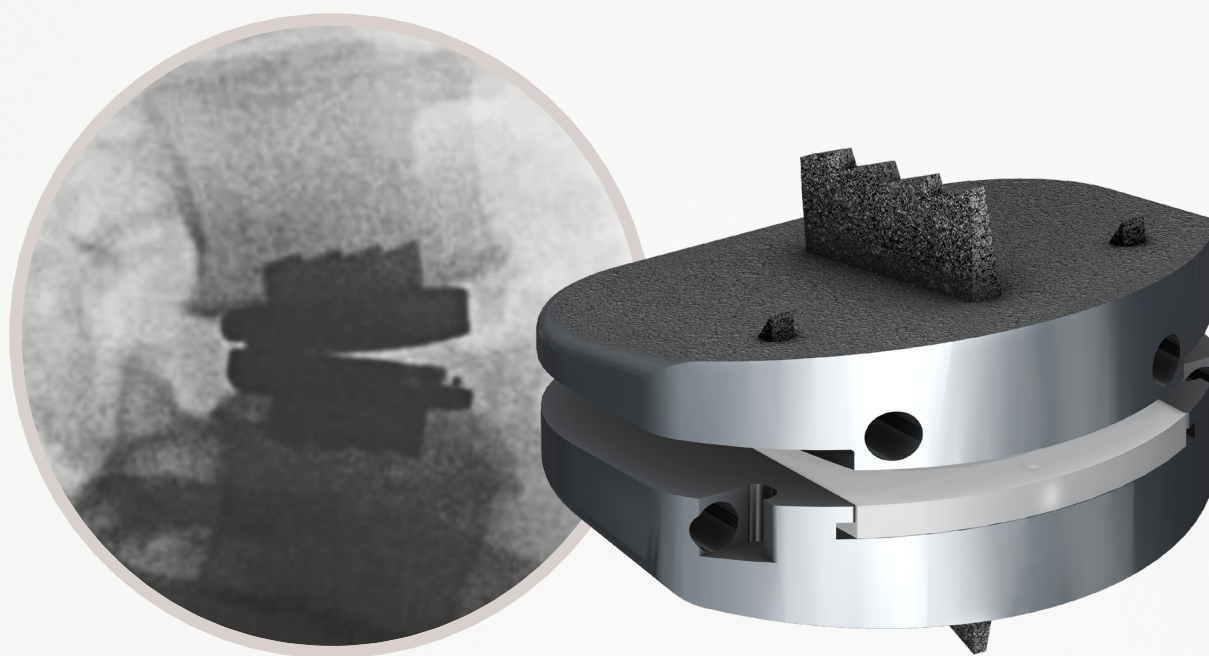


CENTINEL SPINE®

prodisc® L

Clinically Proven Motion Preservation for the Lumbar Spine



PROVEN
DESIGN

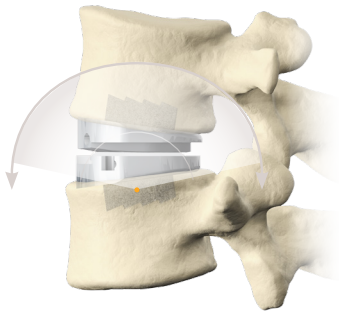
PREDICTABLE
MOTION

CLINICALLY
SUPPORTED



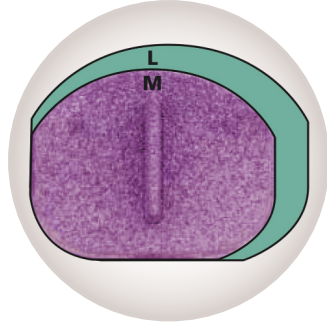
THE MOST CLINICALLY PROVEN TOTAL DISC REPLACEMENT SYSTEM.

PREDICTABLE MOTION



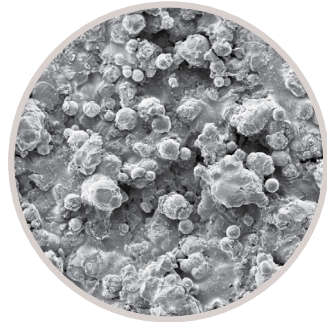
Fixed Center of Rotation

- Allows translation only when coupled with rotation, mimicking the natural movements of the cervical spine.
- Motion is in-line with facets, resisting shear forces.



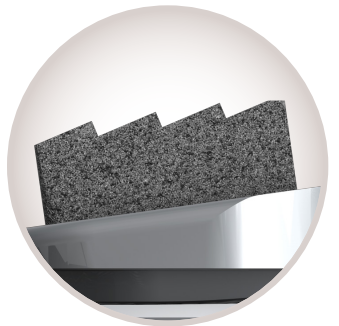
Anatomic Sizing

- 2 footprints, 2 lordotic options, & 3 heights of implants to maximize matching patient anatomy.



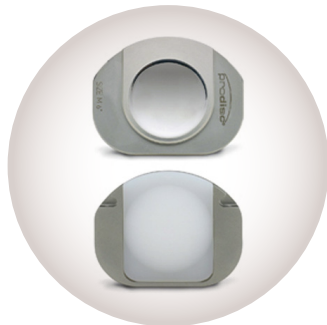
Porous Titanium Surfaces

- Covers all bone contacting surfaces, promoting bony ongrowth, further securing the implant.



Patented Midline Keel

- Provides immediate stability in three planes
- Up to 30% more surface area³ to enhance the potential for bony on-growth.



Ball & Socket Design

- Allows for controlled and predictable segmental motion

No other disc replacement system has been studied more: nearly 40% of all TDR papers report on **prodisc**. More published lives than for any other system with over 13,000 patients reported on in over 400 articles.¹

PROVEN DESIGN

RE-OPERATIONS RELATED TO ALD

2x FEWER

with **prodisc L** vs. fusion²

CHANGES IN ADJACENT LEVEL DISEASE

3.5x FEWER

with **prodisc L** vs. fusion for patients with no preoperative ALD²

CLINICALLY SUPPORTED

- Dedicated resources and support designed to ensure optimal results as you adopt and integrate **prodisc** into your armamentarium.



- Comprehensive support both in-OR and before/after with:

- | | |
|-----------------------------|-------------------------------------|
| 1 Mentorships | 4 Roundtables |
| 2 Proctorships | 5 Case Studies |
| 3 New User Trainings | 6 prodisc Specialists |

¹ Search performed on Pubmed, Embase, Ovid Medline® covering 1988 – 2017.
² Zigler J, Glenn J, Delamarter R, Five-year adjacent-level degenerative changes in patients with single-level disease treated using lumbar total disc replacement with ProDisc-L versus circumferential fusion, JNS, 17:504-511, 2012.
³ Centinel Spine, prodisc Surface Area Measurements, Data Available Upon Request.