



Alphatec **Solus**<sup>®</sup>  
Anterior Lumbar Interbody Fusion

## SYSTEM FEATURES

### Single-Step Fixation Deployment

- Minimalist Instrumentation
- Reduced Operative Time

### Zero-Degree Access of Fixation Deployment

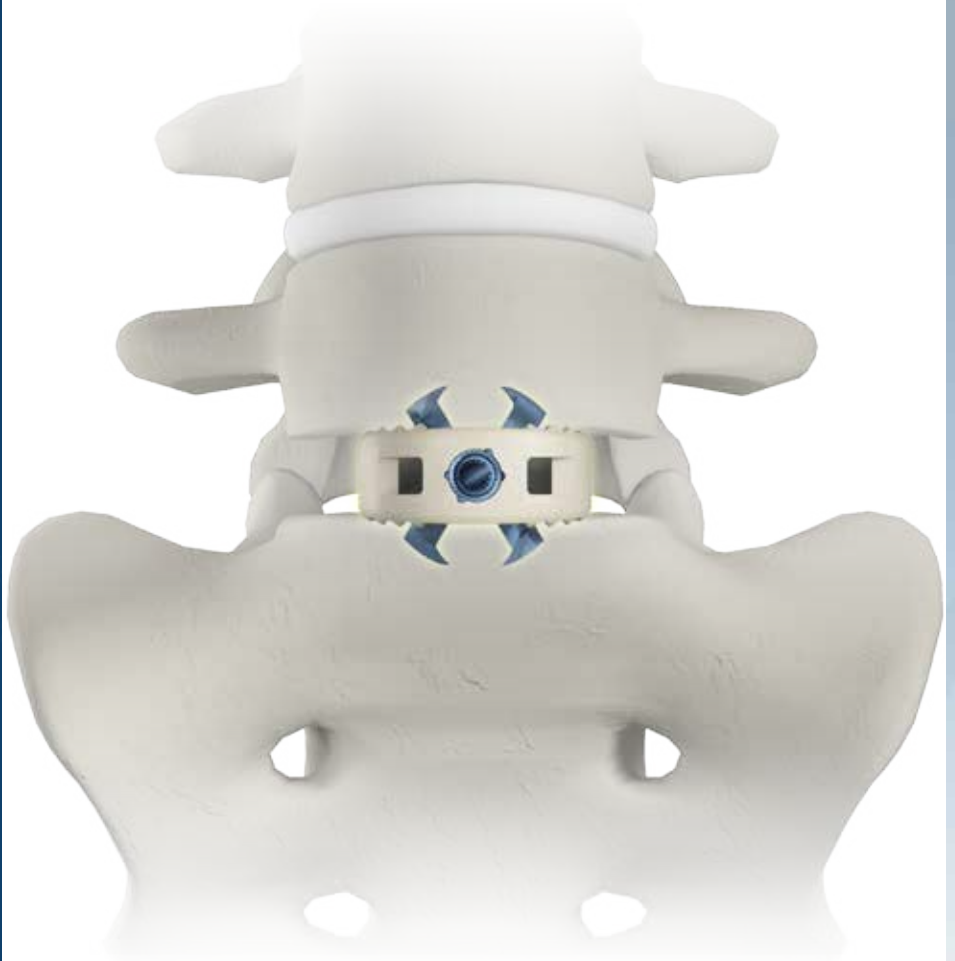
- Minimal Exposure
- No Complications with Screw Trajectory

### Large Graft Volume

- Increases Likelihood of Strong Central Column of Fusion<sup>2</sup>

### Four Points of Fixation

- Proven Biomechanical Stability<sup>1</sup>





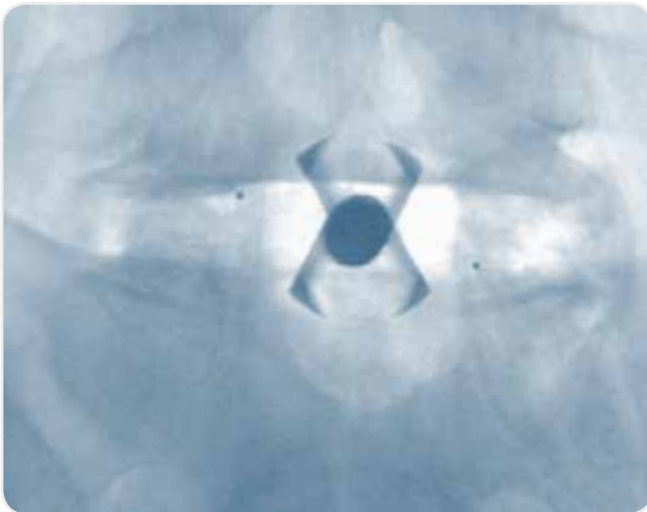
*Simple Insertion*



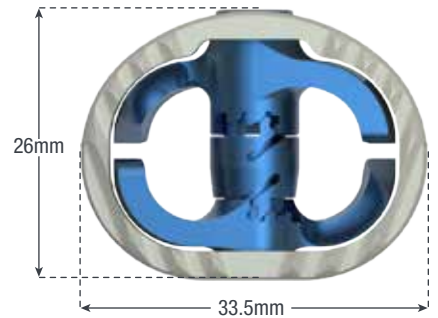
*Minimal Disruption*



**Better Fixation**



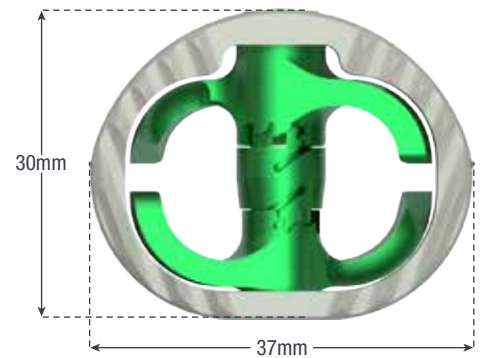
Medium



### Alphatec Solus Dimensions

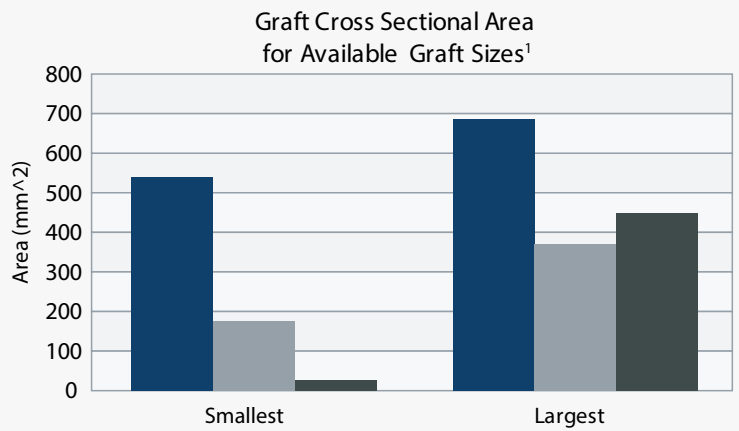
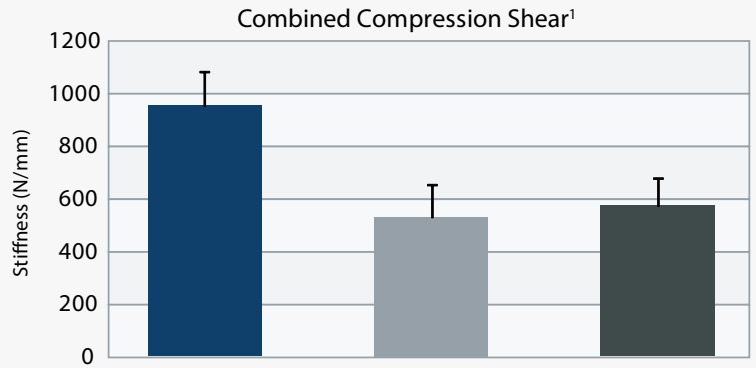
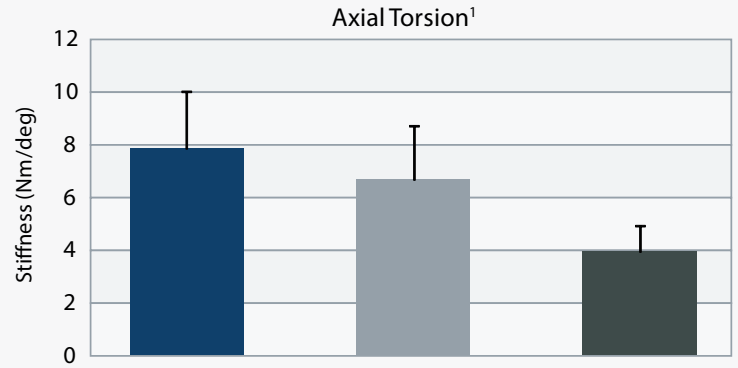
Height (mm)	Footprint - Lordosis			
	Medium - 7°	Medium - 12°	Large - 7°	Large - 12°
10	●	○	●	○
12	●	●	●	●
14	●	●	●	●
16	●	●	●	●
18	○	○	●	●

Large





**Alphatec Solus**    ■ 4 Screw Stand-Alone System    ■ Internal Plate Stand-Alone System



<sup>1</sup> Data on file

### Related products

#### ILLICO® MIS Posterior Fixation System

ILLICO MIS is distinguished by simple and adaptable percutaneous and mini-open screw/rod delivery instruments and implants. ILLICO implants consist of cannulated screws and bulleted, pre-bent rods incorporating a positive rod holder feature.

#### ILLICO® Retractor Posterior Thoracolumbar Access System

The Illico retractor is a minimally invasive posterior thoracolumbar access system. Independent blade retraction creates a customized access site while individual blade toeing, of up to 15 degrees, minimizes soft tissue trauma.

#### ZODIAC® Degenerative Spinal Fixation System and Adjustable Bridge System

Zodiac Degen is a comprehensive system of instruments and implants designed to address instability in the thoracic lumbar, and sacral spine. The Zodiac system offers a comprehensive selection of top-loading, self-tapping screws in titanium and stainless steel to accommodate individual patient anatomy. The Zodiac system can also connect with the Solanas Cervico-Thoracic Posterior Fixation System.

Associated Products	SKIF	Set ID
ILLICO RETRACTOR	SKIF-73500	IRET
ILLICO DISC PREPARATION	SKIF-73501	IPDP
ILLICO SCREW SYSTEM CANNULATED IMPLANT	SKIF-73700-02	IMISC
ILLICO SCREW EXTENDER INSTRUMENTS	SKIF-73700-03	ISEINT
ILLICO SCREW SYSTEM INSTRUMENT	SKIF-73700-04	IMISINT
ZODIAC TI DEGENERATIVE IMPLANTS	SKIF-62111-01	PLX
ZODIAC DEGENERATIVE INSTRUMENT	SKIF-92111-02	PLXINT
ZODIAC TI PELVIC FIXATION IMPLANT SET	SKIF-62111-10	SCOLI
ZODIAC TITANIUM MONOAXIAL DEGENERATIVE IMPLANT	SKIF-62211-01	MNX
ZODIAC PELVIC FIXATION AUXILIARY CADDY	SKIF-92111-05	SCOLIAC

### INDICATIONS:

The Alphatec Solus Anterior Lumbar Interbody Fusion (ALIF) System is a stand alone anterior interbody fusion device that can also be used with supplemental fixation. The Alphatec Solus System is indicated for spinal fusion procedures in skeletally mature patients with degenerative disc disease (DDD) at one or two contiguous levels from L2 to S1. These DDD Patients may also have up to Grade 1 spondylolisthesis or retrolisthesis at the involved level(s). DDD is defined as back pain of discogenic origin with degeneration of the disc confirmed by history and radiographic studies. These patients should be skeletally mature and have had six months of non-operative treatment. The Alphatec Solus implant is intended to be used with autograft.

1 Data on file

2 Bone graft volumetric changes and clinical outcomes after instrumented lumbar or lumbosacral fusion: a prospective cohort study with a five-year follow-up. Ha KY, Lee JS, Kim KW. Spine (Phila Pa 1976). 2009 Jul 15;34(16):1663-8.

Alphatec Solus and the Alphatec Spine logos are trademarks of Alphatec Spine, Inc. © 2012 Alphatec Spine, Inc. All rights reserved. The Alphatec Solus product is not sponsored, endorsed by, or in any way affiliated with SOLAS® or The Society of Lateral Access Surgery.

For more information, visit [alphatecspine.com](http://alphatecspine.com) or contact Customer Service at 800.922.1356 or 760.431.9286

Alphatec Solus and the Alphatec Spine logo are trademarks of Alphatec Spine, Inc. ©2011 Alphatec Spine, Inc. All rights reserved.