



Synimed

Synergie Ingénierie Médicale

Sphere™

Sistema de fijación espinal
Spinal Fixation System



2 **Índice** | Index

3 **Componentes** | Components

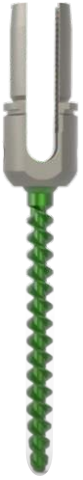
Componentes

Components



Tornillos | Screws

Poliaxial ext.



SPP 45 30L 4.5 x 30 mm
SPP 45 35L 4.5 x 35 mm
SPP 45 40L 4.5 x 40 mm
SPP 45 45L 4.5 x 45 mm
SPP 45 50L 4.5 x 50 mm



SPP 70 30L 7 x 30 mm
SPP 70 35L 7 x 35 mm
SPP 70 40L 7 x 40 mm
SPP 70 45L 7 x 45 mm
SPP 70 50L 7 x 50 mm



SPP 50 30L 5 x 30 mm
SPP 50 35L 5 x 35 mm
SPP 50 40L 5 x 40 mm
SPP 50 45L 5 x 45 mm
SPP 50 50L 5 x 50 mm



SPP 80 40L 8 x 40 mm
SPP 80 45L 8 x 45 mm
SPP 80 50L 8 x 50 mm
SPP 80 60L 8 x 60 mm
SPP 80 70L 8 x 70 mm
SPP 80 80L 8 x 80 mm
SPP 80 90L 8 x 90 mm
SPP 80 100L 8 x 100 mm
SPP 80 110L 8 x 110 mm



SPP 59 30L 5.9 x 30 mm
SPP 59 35L 5.9 x 35 mm
SPP 59 40L 5.9 x 40 mm
SPP 59 45L 5.9 x 45 mm
SPP 59 50L 5.9 x 50 mm

Tornillos | Screws

Poliaxial std.



SPP 45 30S 4.5 x 30 mm
SPP 45 35S 4.5 x 35 mm
SPP 45 40S 4.5 x 40 mm
SPP 45 45S 4.5 x 45 mm
SPP 45 50S 4.5 x 50 mm



SPP 70 30S 7 x 30 mm
SPP 70 35S 7 x 35 mm
SPP 70 40S 7 x 40 mm
SPP 70 45S 7 x 45 mm
SPP 70 50S 7 x 50 mm



SPP 50 30S 5 x 30 mm
SPP 50 35S 5 x 35 mm
SPP 50 40S 5 x 40 mm
SPP 50 45S 5 x 45 mm
SPP 50 50S 5 x 50 mm



SPP 80 40S 8 x 40 mm
SPP 80 45S 8 x 45 mm
SPP 80 50S 8 x 50 mm
SPP 80 60S 8 x 60 mm
SPP 80 70S 8 x 70 mm
SPP 80 80S 8 x 80 mm
SPP 80 90S 8 x 90 mm
SPP 80 100S 8 x 100 mm
SPP 80 110S 8 x 110 mm



SPP 59 30S 5.9 x 30 mm
SPP 59 35S 5.9 x 35 mm
SPP 59 40S 5.9 x 40 mm
SPP 59 45S 5.9 x 45 mm
SPP 59 50S 5.9 x 50 mm

Tornillos pediculares poliaxiales fenestrados | Fenestrated screws

Poliaxial ext.



SPF 45 30L 4.5 x 30 mm
SPF 45 35L 4.5 x 35 mm
SPF 45 40L 4.5 x 40 mm
SPF 45 45L 4.5 x 45 mm
SPF 45 50L 4.5 x 50 mm



SPF 70 30L 7 x 30 mm
SPF 70 35L 7 x 35 mm
SPF 70 40L 7 x 40 mm
SPF 70 45L 7 x 45 mm
SPF 70 50L 7 x 50 mm



SPF 50 30L 5 x 30 mm
SPF 50 35L 5 x 35 mm
SPF 50 40L 5 x 40 mm
SPF 50 45L 5 x 45 mm
SPF 50 50L 5 x 50 mm



SPF 80 40L 8 x 40 mm
SPF 80 45L 8 x 45 mm
SPF 80 50L 8 x 50 mm
SPF 80 60L 8 x 60 mm
SPF 80 70L 8 x 70 mm
SPF 80 80L 8 x 80 mm
SPF 80 90L 8 x 90 mm
SPF 80 100L 8 x 100 mm
SPF 80 110L 8 x 110 mm



SPF 59 30L 5.9 x 30 mm
SPF 59 35L 5.9 x 35 mm
SPF 59 40L 5.9 x 40 mm
SPF 59 45L 5.9 x 45 mm
SPF 59 50L 5.9 x 50 mm

Tornillos pediculares poliaxiales fenestrados | Fenestrated screws

Poliaxial std.



SPF 45 30S 4.5 x 30 mm
SPF 45 35S 4.5 x 35 mm
SPF 45 40S 4.5 x 40 mm
SPF 45 45S 4.5 x 45 mm
SPF 45 50S 4.5 x 50 mm



SPF 70 30S 7 x 30 mm
SPF 70 35S 7 x 35 mm
SPF 70 40S 7 x 40 mm
SPF 70 45S 7 x 45 mm
SPF 70 50S 7 x 50 mm



SPF 50 30S 5 x 30 mm
SPF 50 35S 5 x 35 mm
SPF 50 40S 5 x 40 mm
SPF 50 45S 5 x 45 mm
SPF 50 50S 5 x 50 mm



SPF 80 40S 8 x 40 mm
SPF 80 45S 8 x 45 mm
SPF 80 50S 8 x 50 mm
SPF 80 60S 8 x 60 mm
SPF 80 70S 8 x 70 mm
SPF 80 80S 8 x 80 mm
SPF 80 90S 8 x 90 mm
SPF 80 100S 8 x 100 mm
SPF 80 110S 8 x 110 mm



SPF 59 30S 5.9 x 30 mm
SPF 59 35S 5.9 x 35 mm
SPF 59 40S 5.9 x 40 mm
SPF 59 45S 5.9 x 45 mm
SPF 59 50S 5.9 x 50 mm

Tornillo pedicular monoaxial | Monoaxial screws

Poliaxial ext.



SPM 45 30L 4.5 x 30 mm
SPM 45 35L 4.5 x 35 mm
SPM 45 40L 4.5 x 40 mm
SPM 45 45L 4.5 x 45 mm
SPM 45 50L 4.5 x 50 mm



SPM 70 30L 7 x 30 mm
SPM 70 35L 7 x 35 mm
SPM 70 40L 7 x 40 mm
SPM 70 45L 7 x 45 mm
SPM 70 50L 7 x 50 mm



SPM 50 30L 5 x 30 mm
SPM 50 35L 5 x 35 mm
SPM 50 40L 5 x 40 mm
SPM 50 45L 5 x 45 mm
SPM 50 50L 5 x 50 mm



SPM 59 30L 5.9 x 30 mm
SPM 59 35L 5.9 x 35 mm
SPM 59 40L 5.9 x 40 mm
SPM 59 45L 5.9 x 45 mm
SPM 59 50L 5.9 x 50 mm

Tornillo pedicular monoaxial | Monoaxial screws

Poliaxial std.



SPM 45 30S 4.5 x 30 mm
SPM 45 35S 4.5 x 35 mm
SPM 45 40S 4.5 x 40 mm
SPM 45 45S 4.5 x 45 mm
SPM 45 50S 4.5 x 50 mm



SPM 70 30S 7 x 30 mm
SPM 70 35S 7 x 35 mm
SPM 70 40S 7 x 40 mm
SPM 70 45S 7 x 45 mm
SPM 70 50S 7 x 50 mm



SPM 50 30S 5 x 30 mm
SPM 50 35S 5 x 35 mm
SPM 50 40S 5 x 40 mm
SPM 50 45S 5 x 45 mm
SPM 50 50S 5 x 50 mm



SPM 59 30S 5.9 x 30 mm
SPM 59 35S 5.9 x 35 mm
SPM 59 40S 5.9 x 40 mm
SPM 59 45S 5.9 x 45 mm
SPM 59 50S 5.9 x 50 mm

Ganchos | Hooks



Gancho con cuerpo extendido
Extended body hook
Q55 10



Gancho pedicular
Pedicle hook
Q55 14



Gancho angulado derecho
Right angled hook
Q55 12a



Gancho angulado izquierdo
Left angled hook
Q55 12b



Gancho offset derecho
Right offset hook
Q55 15a



Gancho offset izquierdo
Left offset hook
Q55 15b



Gancho angulado
Angled hook
Q55 16



Gancho con distancia reducida
Reduced distance hook
Q55 20



Gancho ancho
Wide hook
Q55 17a



Gancho angosto
Narrow hook
Q55 17b

Barras | Rods

Barras | Rods Ti 6AL4V

| | |
|--------------------|---------------|
| AS30 55 50 | ø5.5 x 50 mm |
| AS30 55 60 | ø5.5 x 60 mm |
| AS30 55 70 | ø5.5 x 70 mm |
| AS30 55 80 | ø5.5 x 80 mm |
| AS30 55 90 | ø5.5 x 90 mm |
| AS30 55 100 | ø5.5 x 100 mm |
| AS30 55 150 | ø5.5 x 150 mm |
| AS30 55 200 | ø5.5 x 200 mm |
| AS30 55 250 | ø5.5 x 250 mm |
| AS30 55 300 | ø5.5 x 300 mm |
| AS30 55 400 | ø5.5 x 400 mm |
| AS30 55 450 | ø5.5 x 450 mm |



Barras predobladas | Rods pre-bent Ti 6AL4V

| | |
|-------------------|--------------|
| AS40 55 30 | ø5.5 x 30 mm |
| AS40 55 35 | ø5.5 x 35 mm |
| AS40 55 40 | ø5.5 x 40 mm |
| AS40 55 45 | ø5.5 x 45 mm |
| AS40 55 55 | ø5.5 x 55 mm |
| AS40 55 65 | ø5.5 x 65 mm |
| AS40 55 75 | ø5.5 x 75 mm |
| AS40 55 85 | ø5.5 x 85 mm |
| AS40 55 95 | ø5.5 x 95 mm |



Otros componentes | Other components

Tapones | Set screws

61-1001

Tapón
Set screw



Conector transversal | Transversal Connector

AS30 215-14

Cross link articulado diam 5.5mm x14.5mm
Articulated Cross link diam 5.5mm x14.5mm



AS30 215-22

Cross link articulado diam 5.5mm x22mm
Articulated Cross link diam 5.5mm x22mm

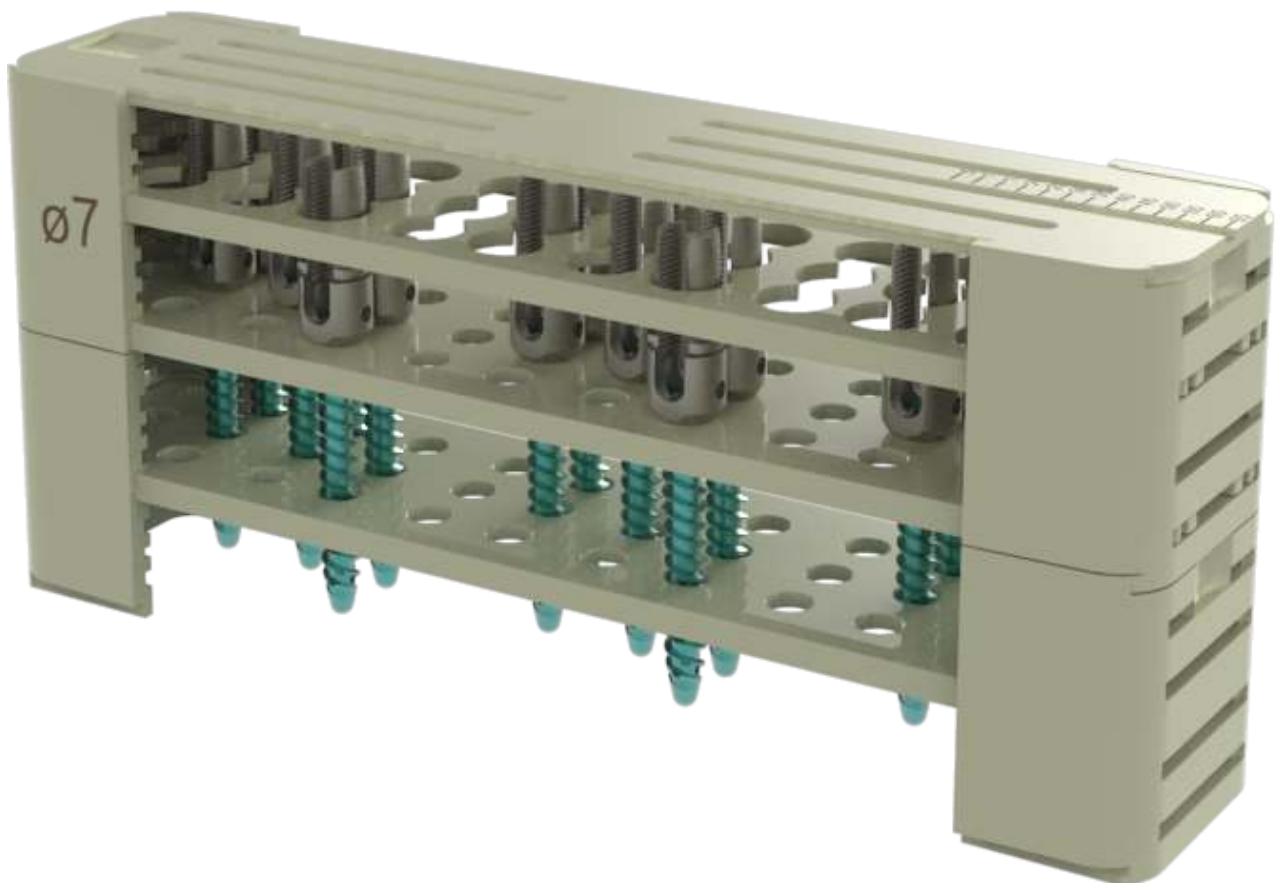


AS30 215-29

Cross link articulado diam 5.5mm x29mm
Articulated Cross link diam 5.5mm x29mm



Instrumental Instruments



Instrumental | Instruments

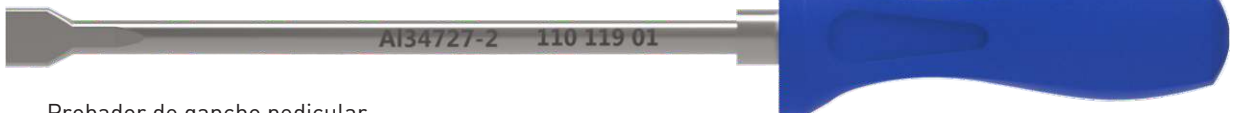
110 020 02

Punch de barra
Rod Punch



110 119 01

Corta aleta Pediátrico y Quimera
Cut Head extention device



110 007 25

Probador de gancho pedicular
Pedicular probe

110 007 28

Probador de gancho laminar ancho
Hook wide probe

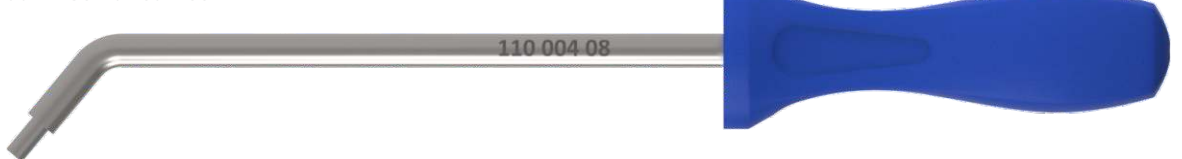
110 007 29

Probador de gancho laminar angosto
Hook narrow probe



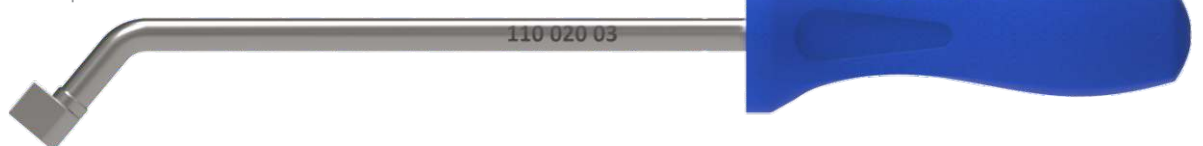
110 004 08

Introduccion de gancho curvo
Hook insertor curved



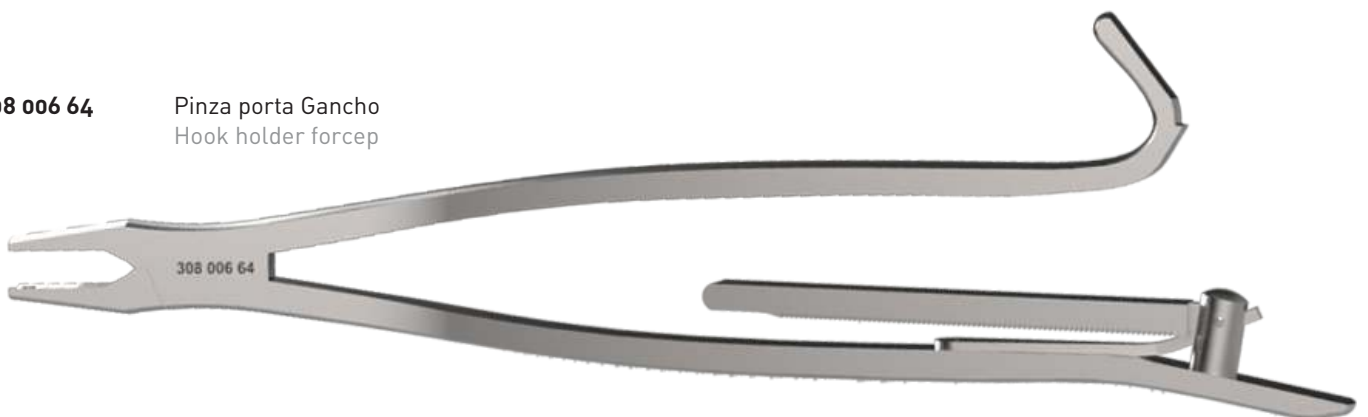
110 020 03

Punch de ganchos
Hook punch



308 006 64

Pinza porta Gancho
Hook holder forcep



Componentes | Components

110 014 00 Dobladora
French rod bender



110 013 00 Cizalla
Rod Cutter



110 083 11 Tubo desrotador
De-rotator Tube

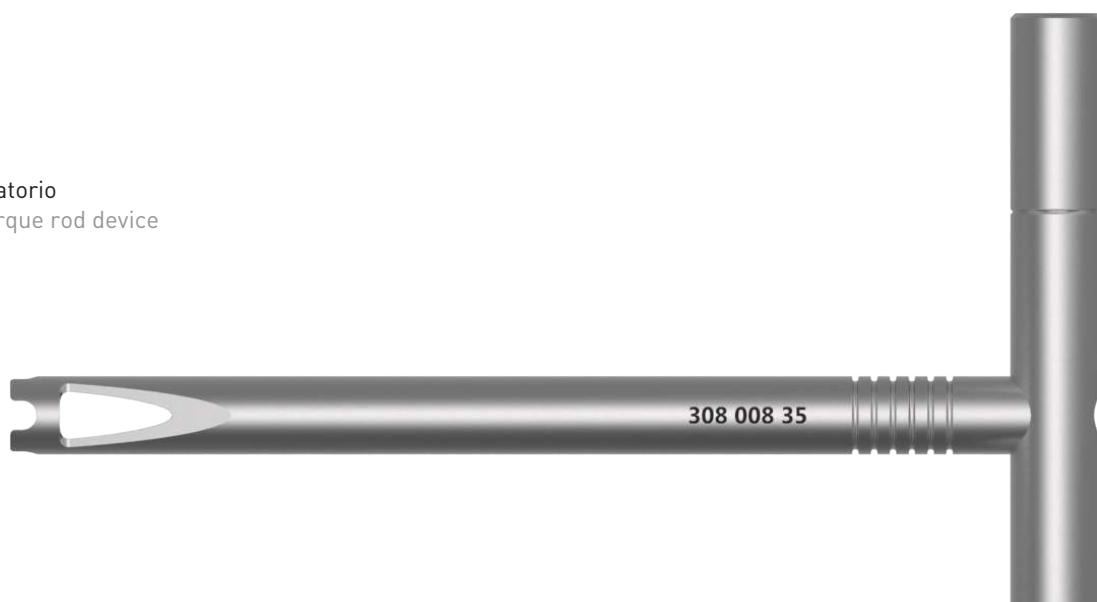


Instrumental | Instruments

308 120 00 Tubo Centrador de Prisionero
Set Screw centering



308 008 35 Antirotatorio
Anti-torque rod device



308 017 14/15 Grifa Insitu 5,5 Derecha / izquierda
Right/Left in situ Rod Bender for rod 5,5 mm



110 033 00 Cartabón
Template



Instrumental | Instruments

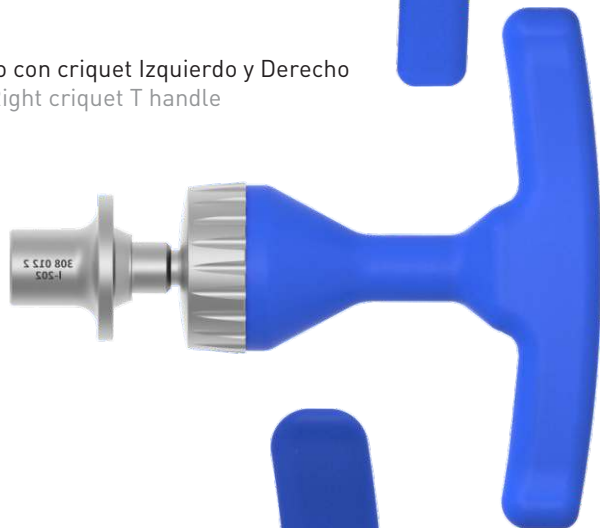
308 025 09

Torquimetro 70 lb/inch
Torque Wrench 70 lb/inch



308 012 16

Mango con criquet Izquierdo y Derecho
Left/Right criquet T handle



308 012 02

Mango en T
T handle



308 012 15

Mango Largo con Criquet
Long Handle with Criquet



Instrumental | Instruments

308 004 00 Introdutor
Introducer



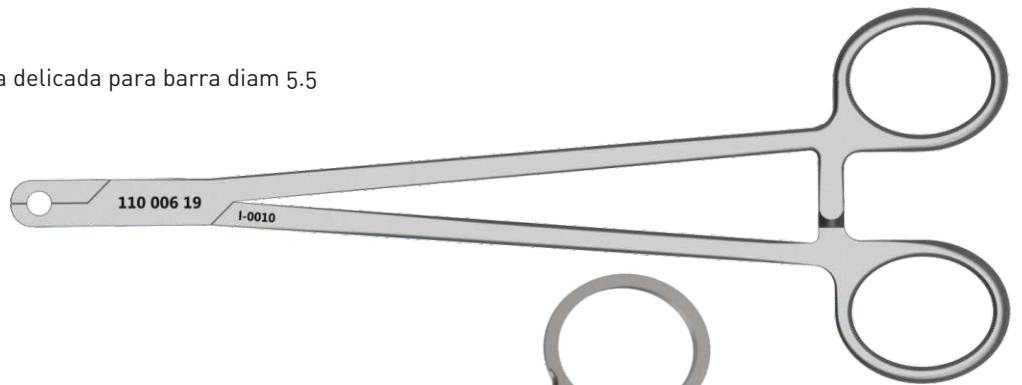
308 031 00 Atornillador
screw driver



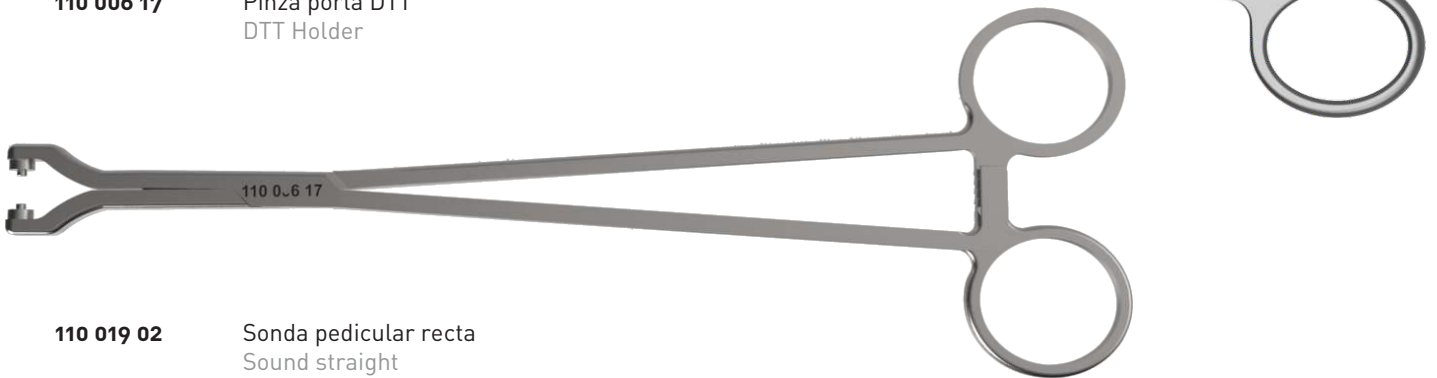
308 038 31 Atornillador corto hex 3,5 acople cuadrado
Hex 3.5 screw driver



110 006 19 Pinza portabarra delicada para barra diam 5.5
Rod Holder \varnothing 5.5



110 006 17 Pinza porta DTT
DTT Holder



110 019 02 Sonda pedicular recta
Sound straight



110 019 01 Sonda pedicular curva
Sound curve

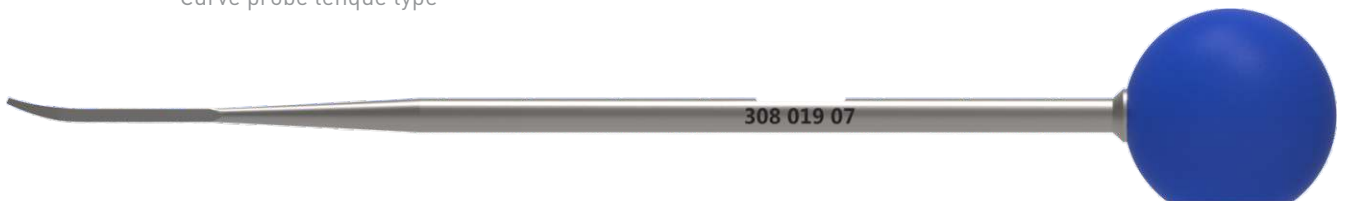


110 070 02 Llave tubo con acople cuadrado
Pipe wrench



Instrumental | Instruments

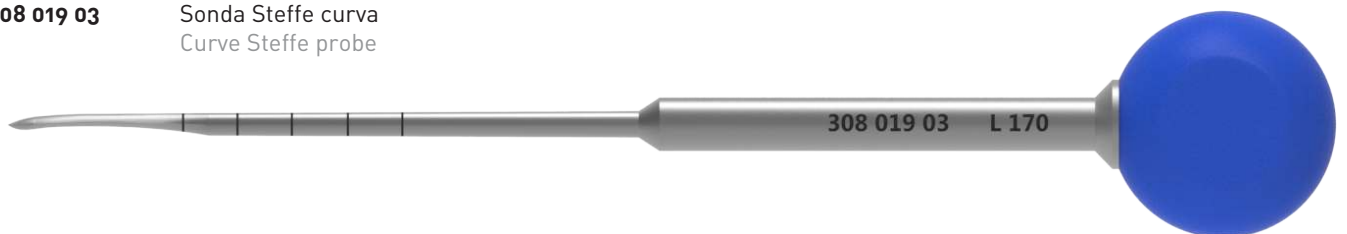
308 019 07 Sonda steffe curva tipo lenque
Curve probe lenque type



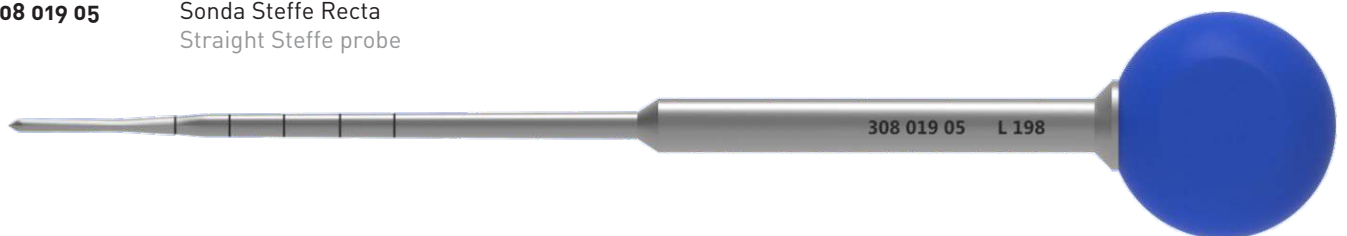
308 019 06 Sonda steffe recta tipo lenque
Straight probe lenque type



308 019 03 Sonda Steffe curva
Curve Steffe probe



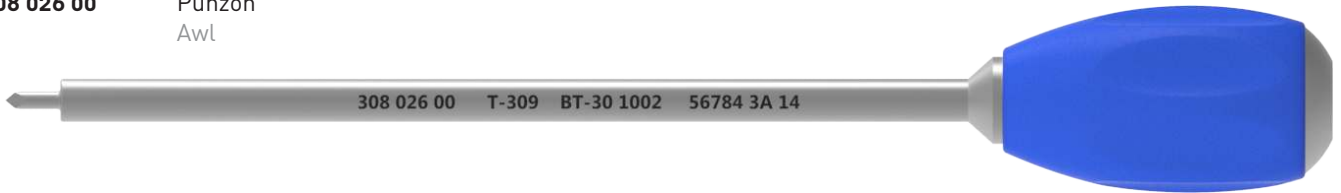
308 019 05 Sonda Steffe Recta
Straight Steffe probe



Instrumental | Instruments

308 026 00

Punzón
Awl



308 076 04

Persuader Toma Tulipa (3 partes incluido 308 027 04)
Head Aproximator (3 pieces included 308 027 04)



308 027 04

Levanta prisionero persuader
Set Screw holder aproximator



308 076 00

Persuader articulado
Rod aproximator



308 071 10

Tenedor
Hook and screw persuader



Componentes | Components

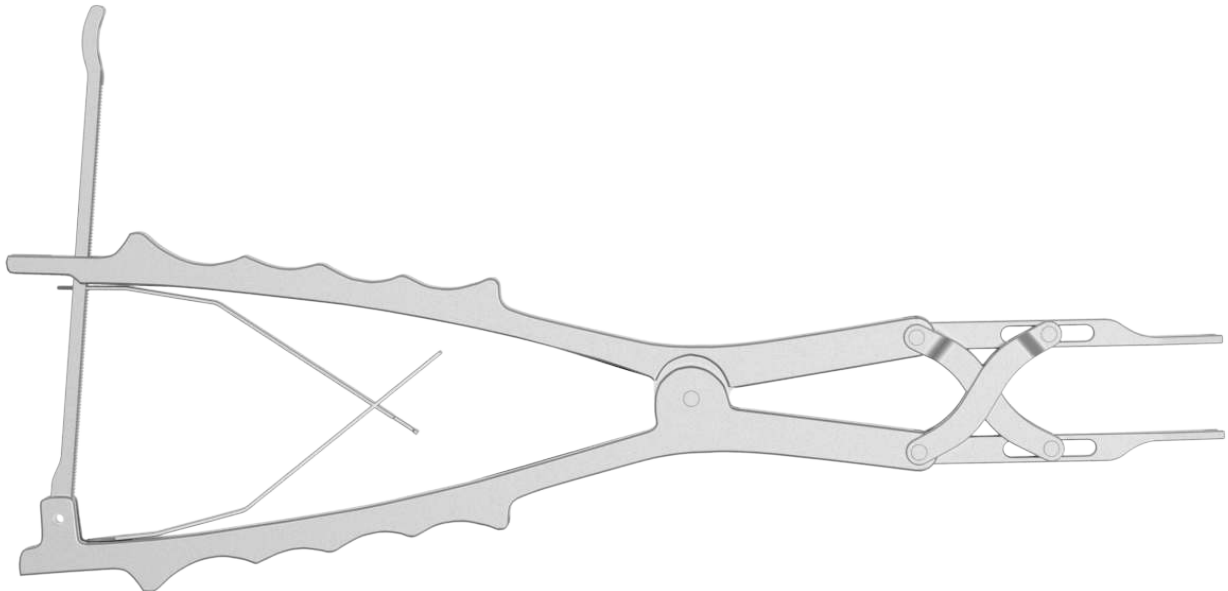
308 012 17 Mango Gira Loco



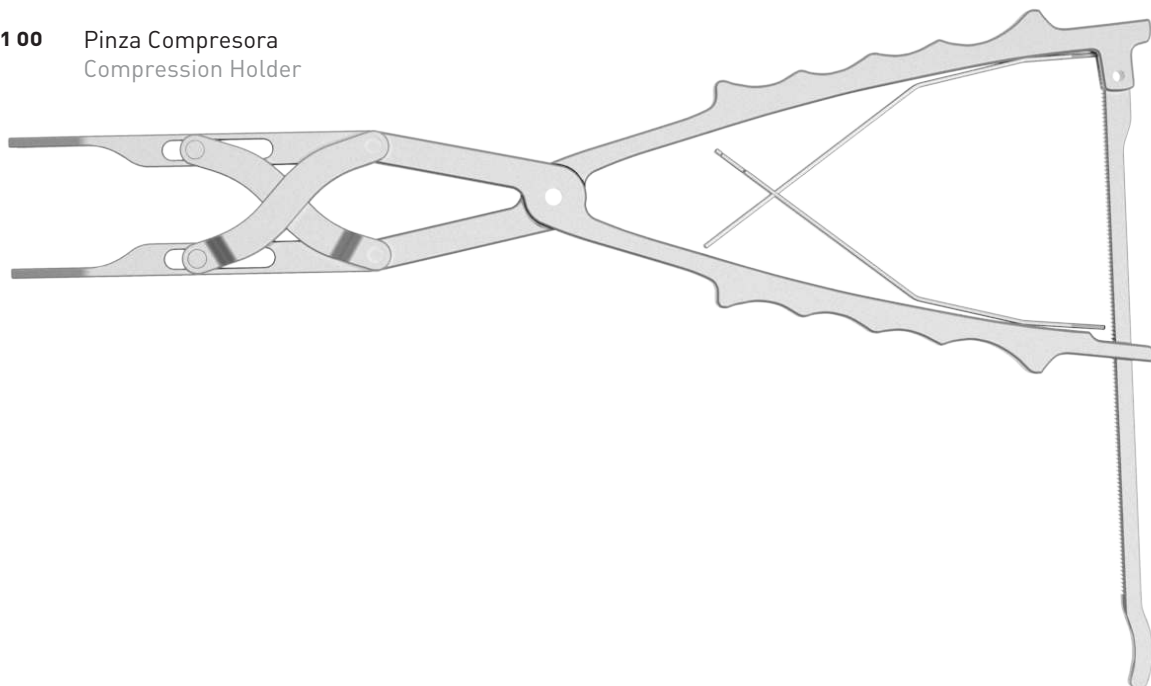
110 058 03 Desrotadora de barra
Derotation device for rod



308 022 00 Pinza Distractora
Distractor Holder

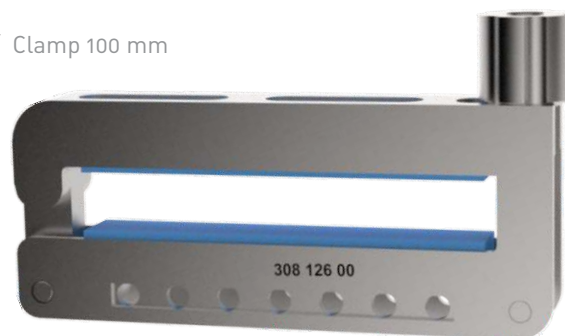


308 021 00 Pinza Compresora
Compression Holder



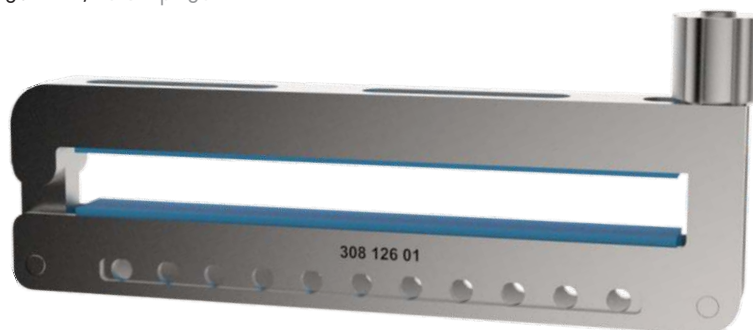
308 126 00

Clamp 100 mm / Clamp 100 mm



308 126 01

Clamp 150 mm / Clamp 150 mm



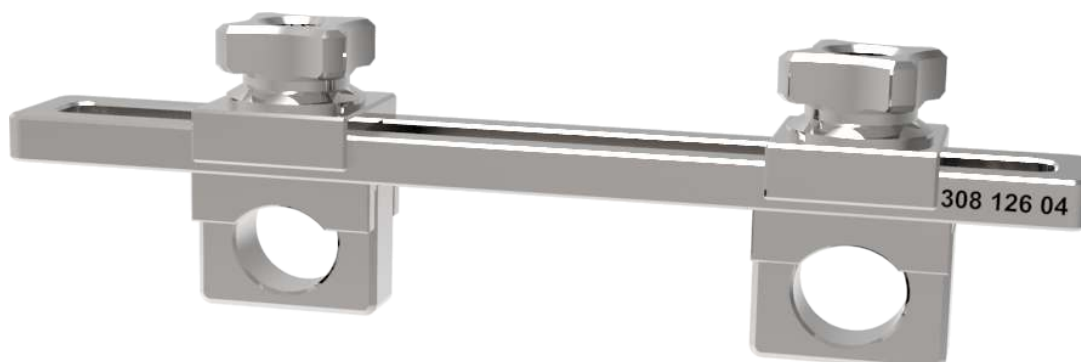
308 126 03

Conector transversal Largo / Long Transversal connector



308 126 04

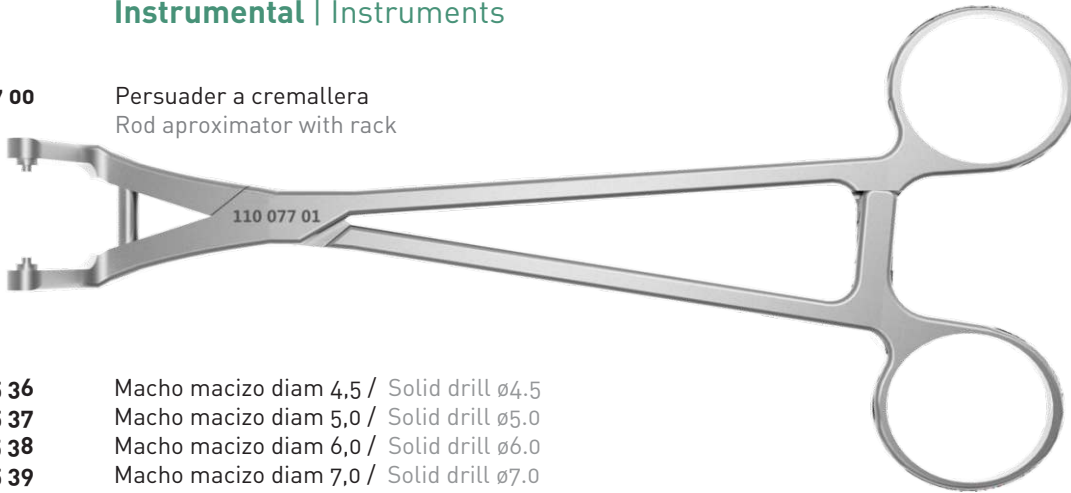
Conector transversal Corto / Short Transversal connector



Instrumental | Instruments

110 077 00

Persuader a cremallera
Rod approximator with rack



308 035 36
308 035 37
308 035 38
308 035 39

Macho macizo diam 4,5 / Solid drill \varnothing 4.5
Macho macizo diam 5,0 / Solid drill \varnothing 5.0
Macho macizo diam 6,0 / Solid drill \varnothing 6.0
Macho macizo diam 7,0 / Solid drill \varnothing 7.0



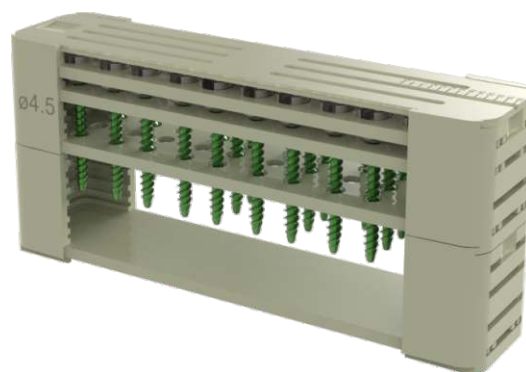
308 035 26
308 035 27
308 035 14

Macho canulado diam 4,5 / Canulated drill \varnothing 4.5
Macho canulado diam 5,0 / Canulated drill \varnothing 5.0
Macho canulado diam 6,0 / Canulated drill \varnothing 6.0



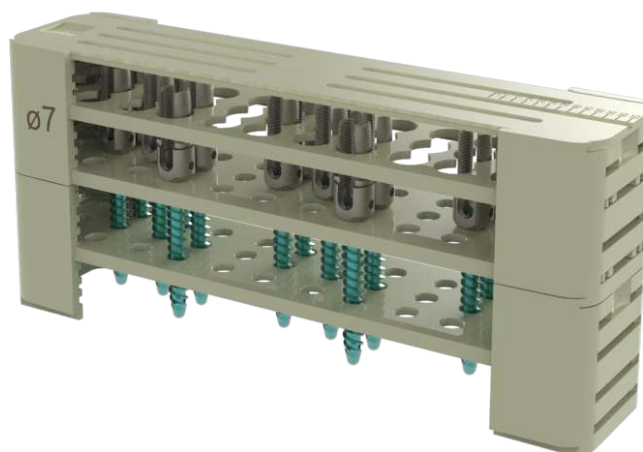
308 110 00

Tornillera diam 4,5 std o ext
ø4,5 Screw container std-ext



308 110 01

Tornillera diam 5,0 std o ext
ø5,0 Screw container std-ext



308 110 02

Tornillera diam 6,0 std o ext
ø6,0 Screw container std-ext



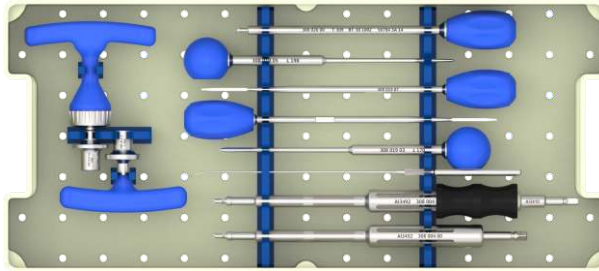
308 002 35

Contenedor de ganchos
Hook container

Componentes | Components

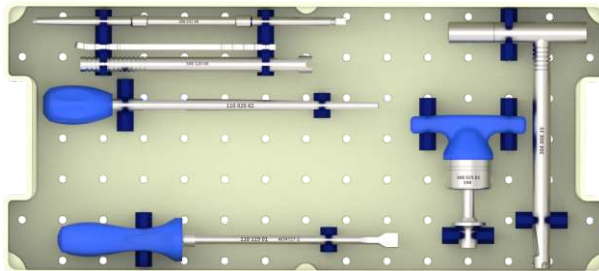
308 003 12

Bandeja de Instrumental N°1
Instruments Tray N°1



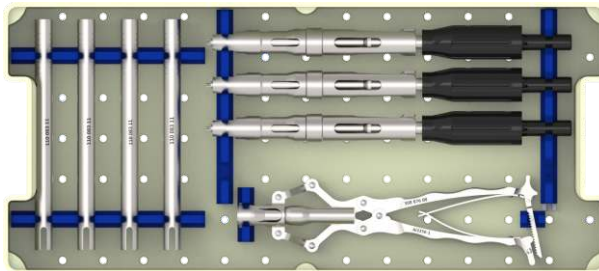
308 003 13

Bandeja de Instrumental N°2
Instruments Tray N°2



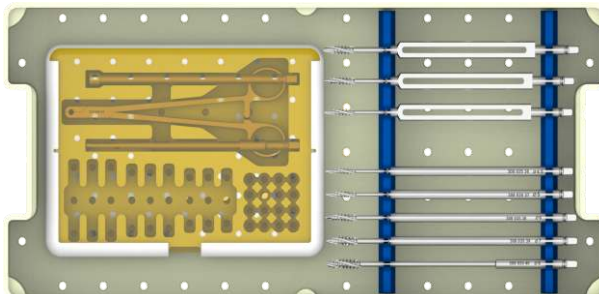
308 003 14

Bandeja de Instrumental N°3
Instruments Tray N°3



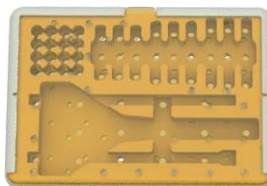
308 003 15

Bandeja de Instrumental N°4
Instruments Tray N°4



110 001 10

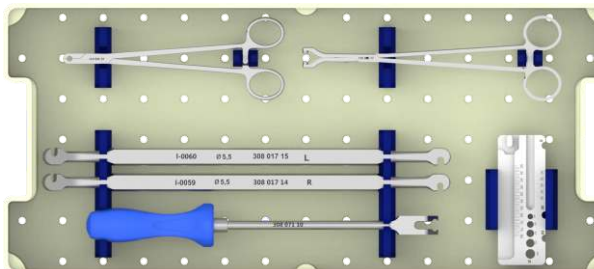
Contenedor de DTT
DTT container



Componentes | Components

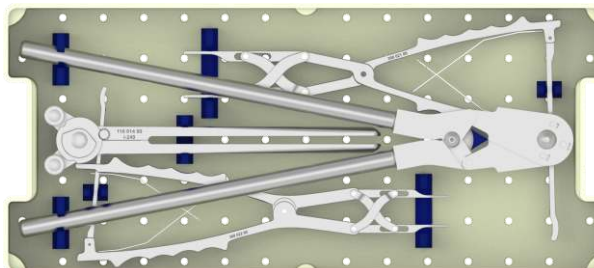
308 003 16

Bandeja de Instrumental N°5
Instruments Tray N°5



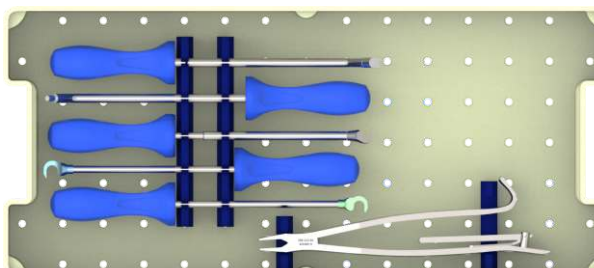
308 003 17

Bandeja de Instrumental N°6
Instruments Tray N°6



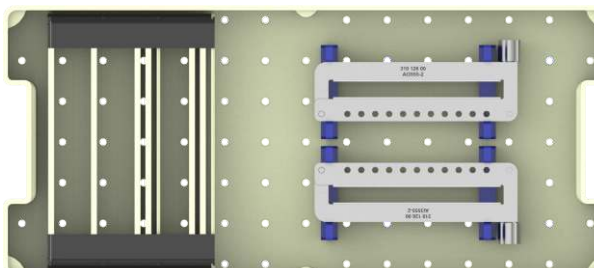
308 003 18

Bandeja de Instrumental N°7
Instruments Tray N°7



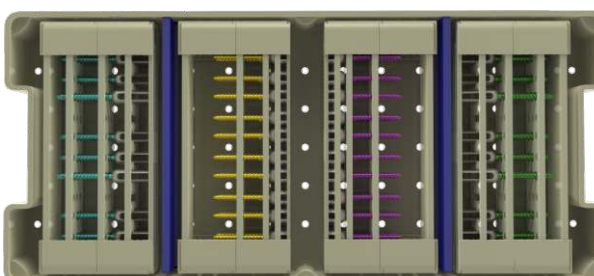
308 003 19

Bandeja de Instrumental N°8
Instruments Tray N°8



308 003 23

Bandeja de Instrumental N°9
Instruments Tray N°9



Publicado 13-01/16
Rev B / 27 pages
published 13-01/16
Rev B / 27 páginas



Sphere™

Sistema de fijación espinal
Spinal Fixation System

www.synimed.com
Z.A. De L'Angle - 19370
Tel: (33) 555983138
Chamberet - FRANCE

CE
0499