

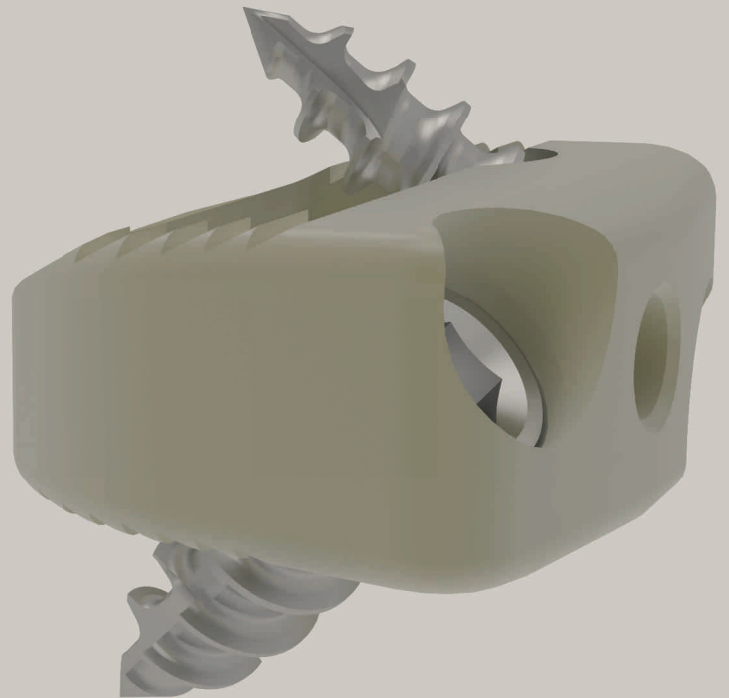


SafeOrthopaedics™

Walnut.

THE MODULAR CERVICAL CAGE

- CAGE WITH PRE-LOADED SCREWS
- MODULAR SURGICAL TECHNIQUE
- FAST SURGERY



Safe Orthopaedics' mission is to facilitate all surgeries with one safe, efficient and intuitive kit.

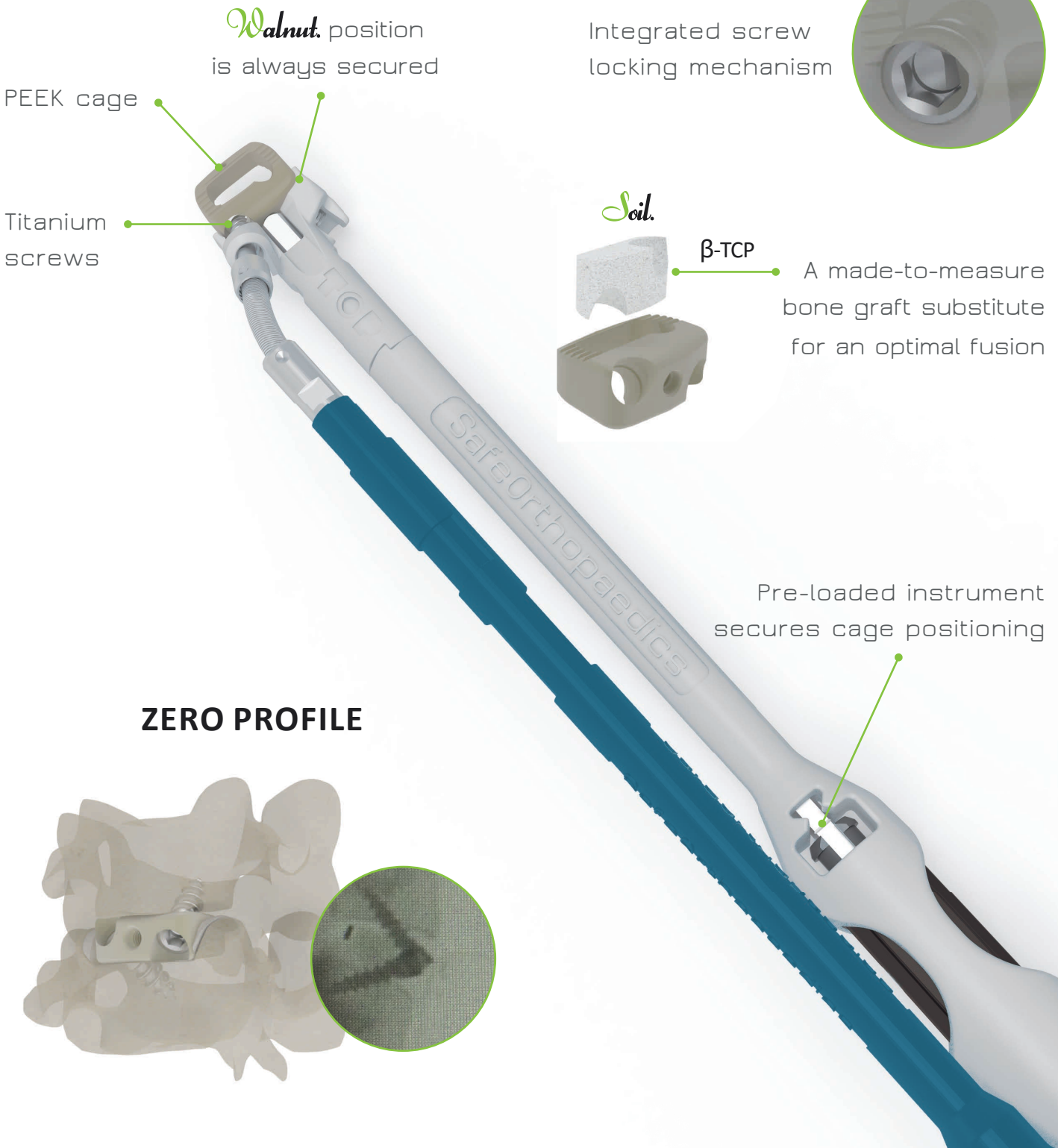
■ MODULAR SURGICAL TECHNIQUE

- › Option to use an associated bone graft substitute
- › Pre-loaded screws for a safe fixation
- › Instrument design for a minimal invasive approach

■ FAST SURGERY

- › Pre-loaded screws for a fast fixation
- › Screw insertion and locking in one-step
- › Intuitive and efficient instrumentation

CAGE WITH PRE-LOADED SCREWS



Walnut. position is always secured

PEEK cage

Titanium screws

Integrated screw locking mechanism

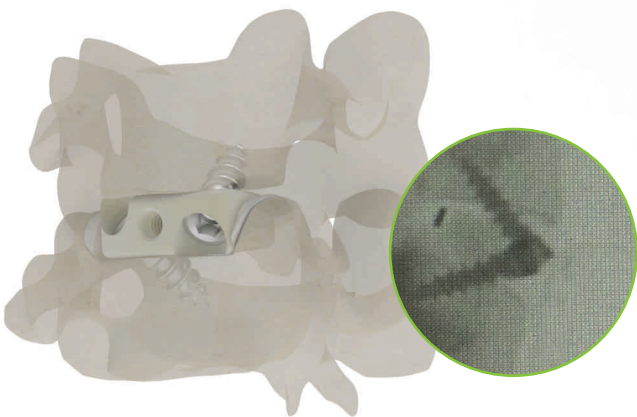
Soil.

β -TCP

A made-to-measure bone graft substitute for an optimal fusion

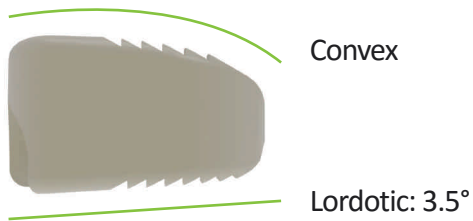
Pre-loaded instrument secures cage positioning

ZERO PROFILE

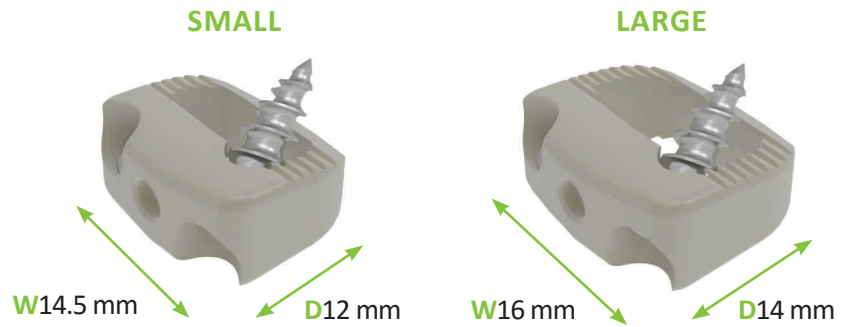


IMPLANT CHARACTERISTICS

Anatomical shape



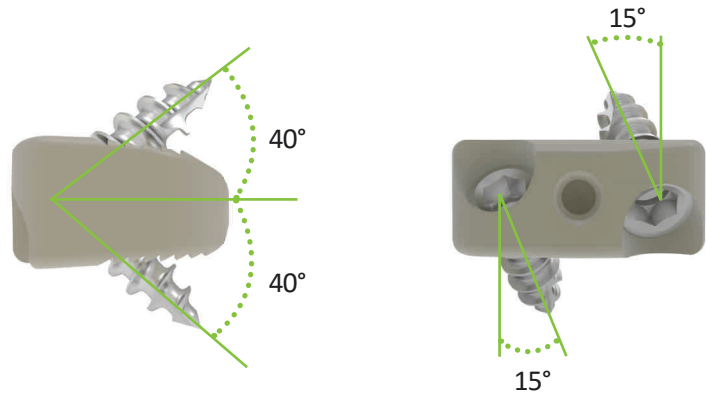
2 footprints



Screws aligned with posterior marker



Fixed angle



One screw length for one footprint

Small cage
L=12 mm

Large cage
L=15 mm

- OPTIMAL ANATOMICAL FIXATION
 - › Cage shape fits with patient anatomy
 - › Screw angulation ensures an optimal fixation

PRODUCT RANGE

PRODUCT REFERENCE: KITCCSXXX

Pre-loaded screws: Ø3.5 mm - Rescue screws: Ø4.0 mm

SMALL

W 14.5 MM - D 12 MM

Heights 05, 06, 07, 08 mm

LARGE

W 16 MM - D 14 MM

Heights 05, 06, 07, 08, 09, 10 mm

USED WITH STERISPINE™ CC



- NEW AND STERILE INSTRUMENTS
- FULLY TRACEABLE
- MODULAR ANCILLARY



Safe Orthopaedics
Parc des Bellevues
Allée R. Luxembourg Le Californie
95610 Eragny sur Oise - France

Phone +33(0) 1 34 21 50 00
Fax +33(0) 1 34 21 12 00

www.safeorthopaedics.com

Indications for use:

The Sterispine™ CC- Cervical cage is intended to stabilize cervical spinal segment to promote fusion in order to restrict motion and decrease pain. The Sterispine™ CC- Cervical cage is indicated for anterior cervical interbody fusion procedures in skeletally mature patients with cervical degenerative disc disease at one-level from the C2-C3 disc to C7-T1 disc. Cervical disc disease is defined as intractable radiculopathy and/or myelopathy with herniated disc and/or osteophyte formation on posterior vertebral endplates producing symptomatic nerve root and/or spinal cord compression confirmed by radiographic studies.

The Sterispine™ CC- Cervical cage implant are to be used with autograft, allograft and synthetic bone substitute and implanted via an open, anterior approach. This cervical device is to be used in patients who have had at least six weeks of non operative treatment.

SteriSpine™ CC products are Medical Devices, CE marked (Class IIa – Instruments; Class IIb – Implants); NB: LNE/G-MED) and manufactured by Safe Orthopaedics. Soil. is distributed by Safe Orthopaedics and manufactured by SBM. Cage is made in PEEK (ASTM F2026), screws in Titanium (ASTM F136) and the system has been tested according to ASTM F2077 and ASTM F2267.

Product references: Implants: KITCCSxxx – Instruments: KITCCANC

PLEASE CONSULT CAREFULLY THE INSTRUCTIONS FOR USE.

Product availability cannot be guaranteed in all countries. For further informations please contact your sales representative.

Creation: September 2016, PMC005_EN_A