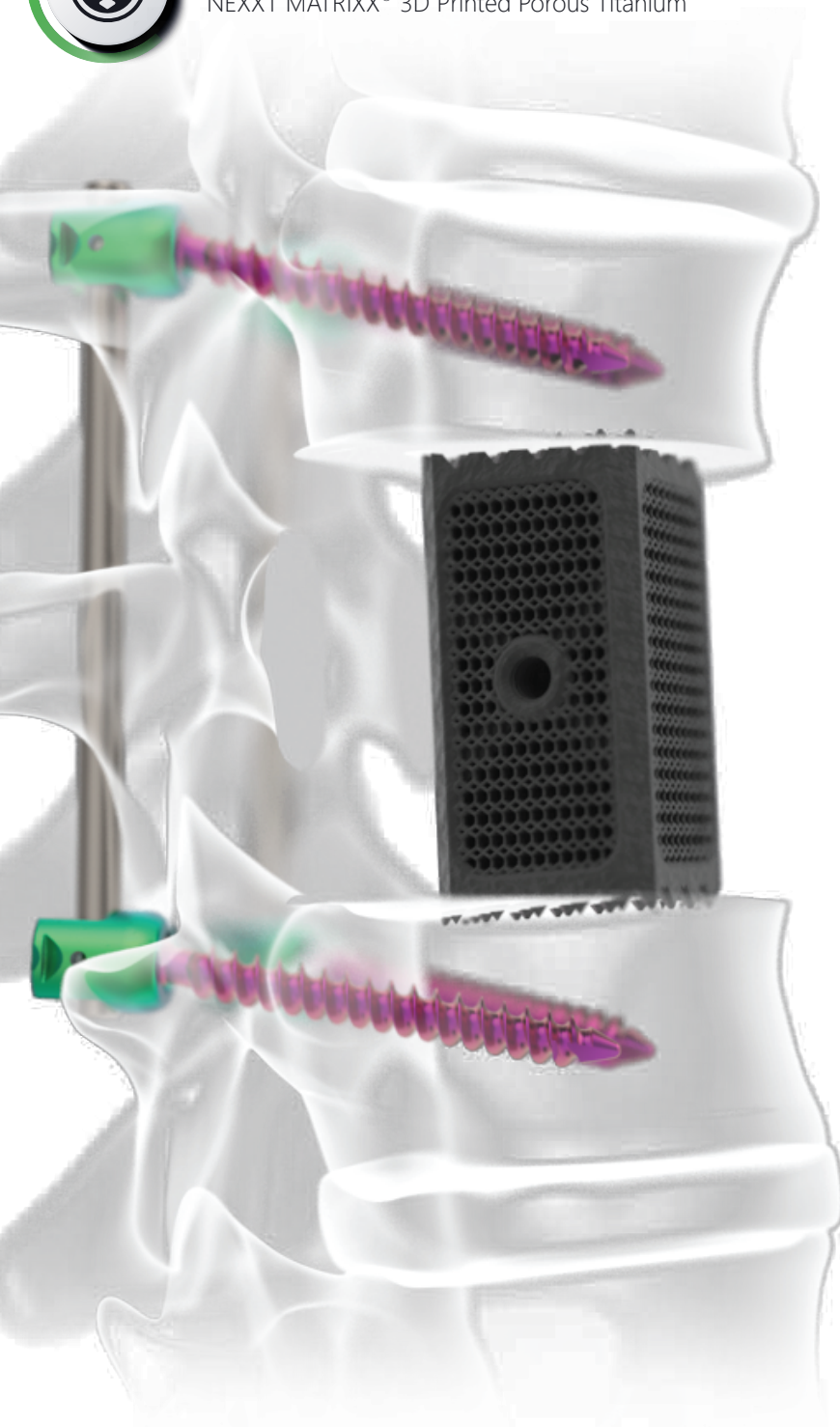
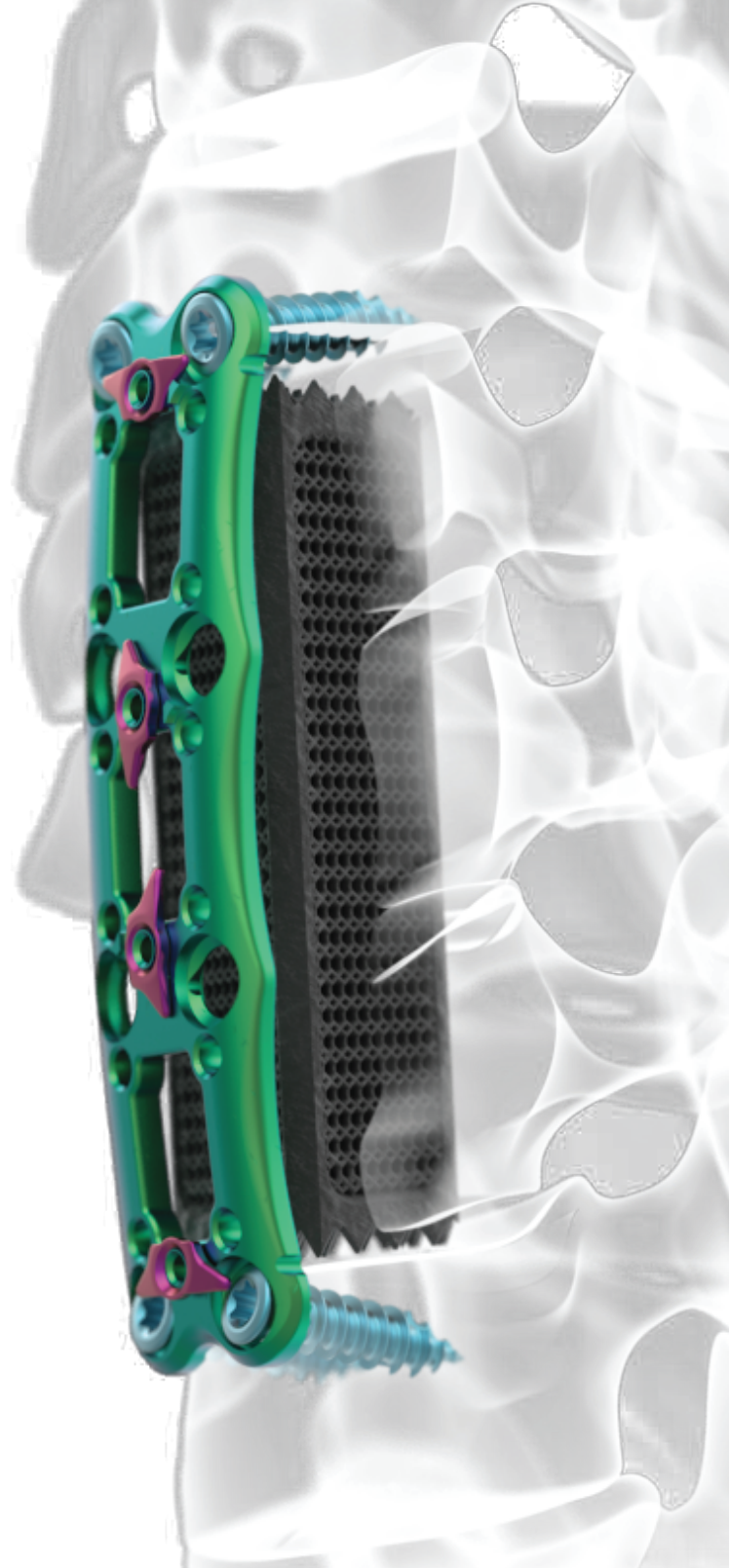




CORPECTOMY
NEXXT MATRIX[®] 3D Printed Porous Titanium



With INERTIA[®] Pedicle Screw System



With STRUXURE[®] Anterior Cervical Plate

NEXXT
Spine

317-436-7801
INFO@NEXXTSPINE.COM
14425 BERGEN BLVD, STE B
NOBLESVILLE, IN 46060
70-069E, Rev A



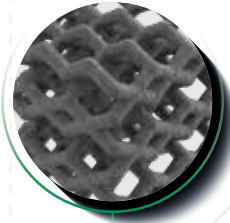
NEXXT MATRIXX®

3D Printed porous titanium

CORPECTOMY

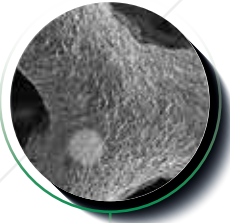
Total implant lattice integration

10X



Systematic Titanium
PORES

300X



Uncompromising
MACROSURFACE

10,000X



7µ Surface
MICROSURFACE

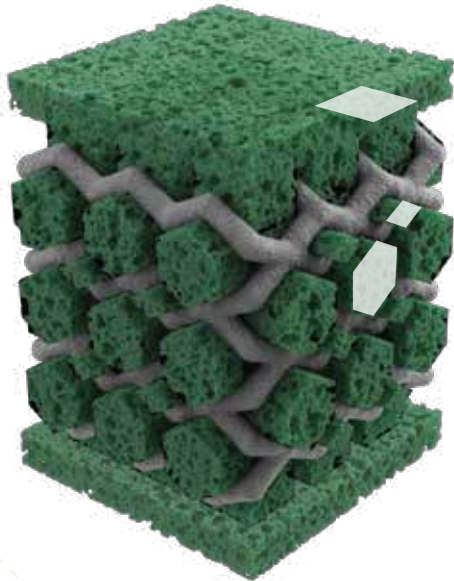


Image represents potential bony ingrowth



TI PORES

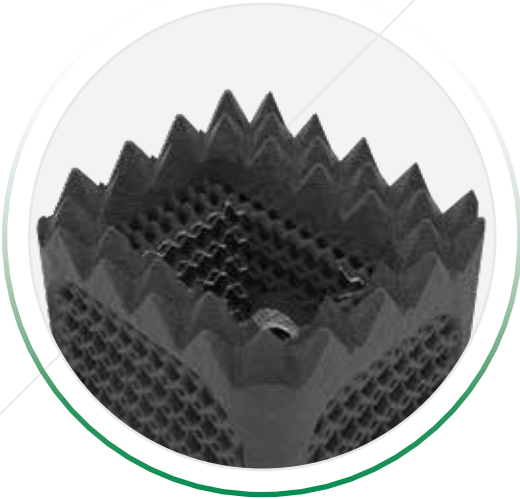
- NEXXT MATRIXX® exhibits three pore sizes of 300, 500, and 700µ.
- Minimized titanium material resulting in a 75% open porous architecture.

SURFACE

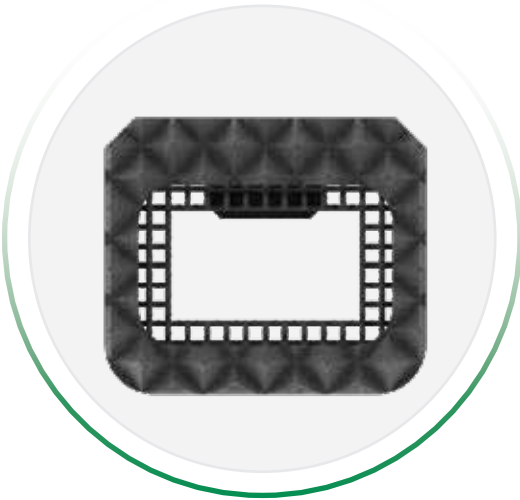
- Nexxt Spine has developed a proprietary, residue free, micro-roughening process that creates a highly cohesive 7µm roughened topography.
- Due to the micro-roughened porous structure of the NEXXT MATRIXX® titanium, the implants exhibit up to 4X more surface area for bone apposition and potential bony integration than conventional spinal implants.

FEATURES

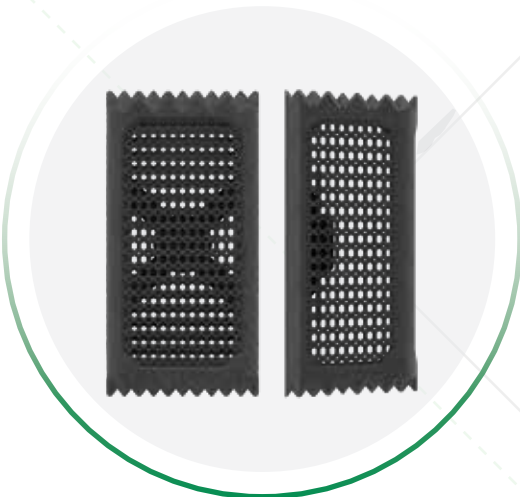
Enabling new corpectomy implant possibilities



Aggressive teeth for secure placement



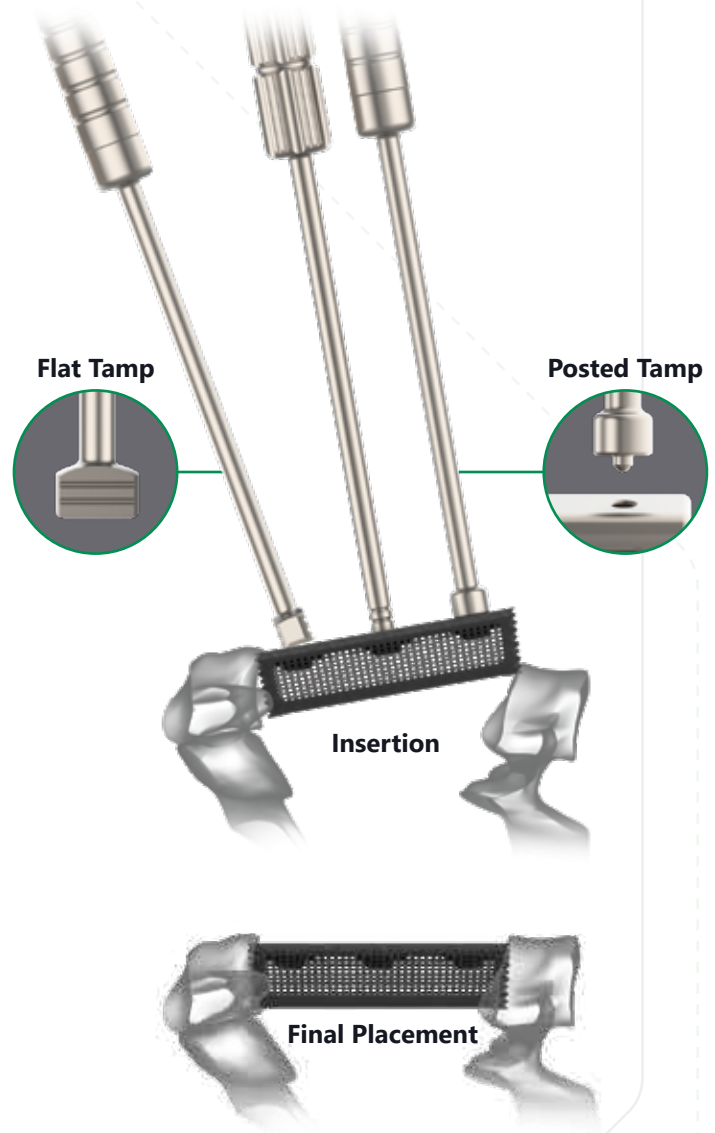
Entire implant graft support



Complete A/P + lateral visualization

INSTRUMENTATION

For intraoperative optimization



IMPLANT OFFERING

Accommodation of anatomy

12D x 14Wmm 0°

12Dx14Wx16-40Hmm 0° 2mm increments

12D x 14Wmm 6°

12Dx14Wx11-30Hmm 6° 1mm increments
12Dx14Wx32-50Hmm 6° 2mm increments

14D x 16Wmm 0°

14Dx16Wx16-40Hmm 0° 2mm increments

14D x 16Wmm 6°

14Dx16Wx11-30Hmm 6° 1mm increments
14Dx16Wx32-50Hmm 6° 2mm increments