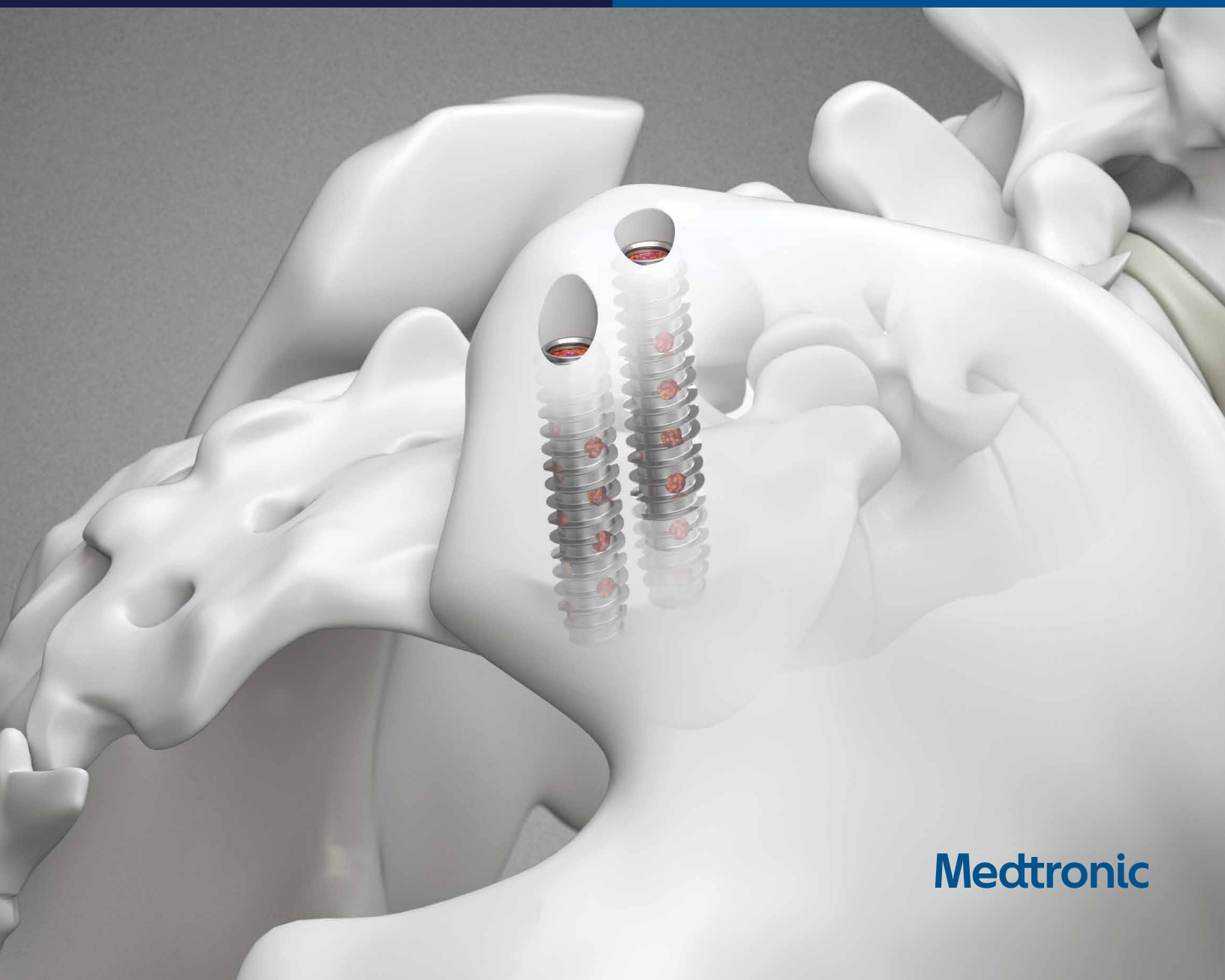


**A UNIQUE
APPROACH
TO SACROILIAC
JOINT FUSION
PROCEDURES**

**PROCEDURE
OVERVIEW**

Rialto™
SI Fusion System

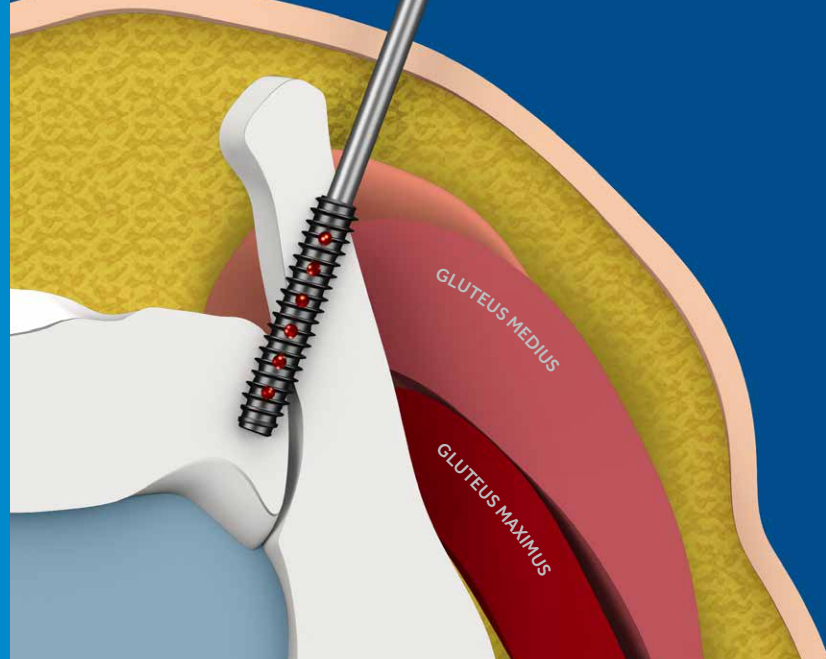


Medtronic

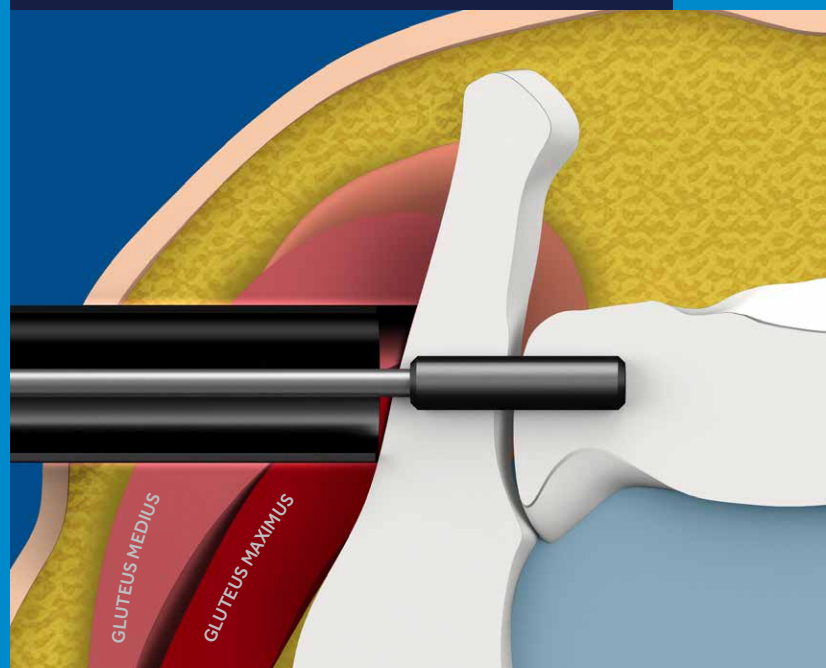
A DIFFERENT APPROACH TO SI JOINT FUSION.

Most SI fusion devices today are assisted by muscle/tissue retractors due to the transgluteal/lateral approach. **Medtronic's Rialto SI fusion procedure uses a posterior approach** to the SI Joint, which has inherent benefits for surgeons and patients.*

- **EASIER ACCESS**
Implant passes through less tissue and muscle during implantation.
- **BETTER VISIBILITY**
Posterior access provides better visibility, especially when treating larger patients.
- **LESS INVASIVE**
Fewer muscles are disrupted using our posterior approach.
- **LESS SURGICAL STEPS**
Each Rialto device takes fewer surgical steps to implant under either navigation or fluoroscopy.



Minimal muscle disruption with a posterior approach.



Muscles are disrupted with a transgluteal/lateral approach.

Risks

- Migration, loosening, or fracture of the implant.
- Metal sensitivity, or allergic reaction to a foreign body, debris, corrosion products including metallosis, staining, tumor formation and/or autoimmune disease.
- Decrease in bone density due to stress shielding.

*Data on file.

WE BRING **FULLY ENABLED PROCEDURES** TO YOUR OR.

The validated integration of our technologies and therapies can enable **smarter and more efficient surgery to advance patient care.**



Imaging



Navigation



Navigated
Instruments



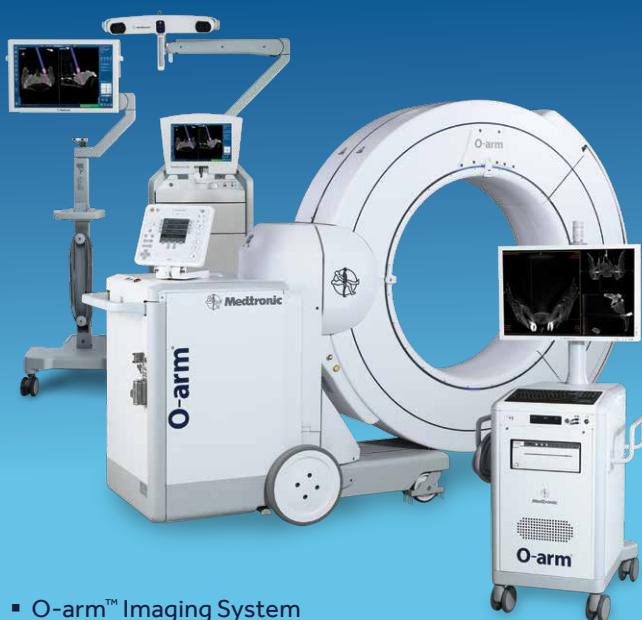
Powered
Instruments



Biologics



Implants



- O-arm™ Imaging System
- StealthStation™ S7™ System

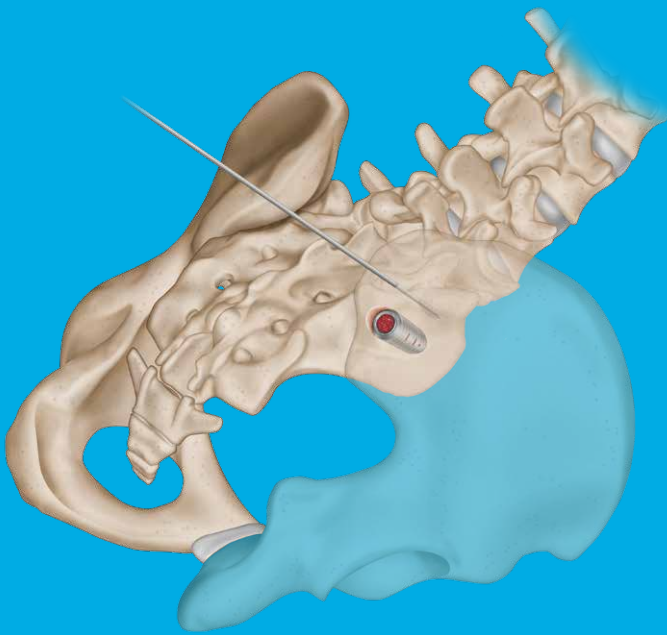
- IPC™ Powerease™ System
- StealthStation NavLock Instruments
- Grafton™ Demineralized Bone Matrix (DBM) Putty
- Rialto SI Fusion System



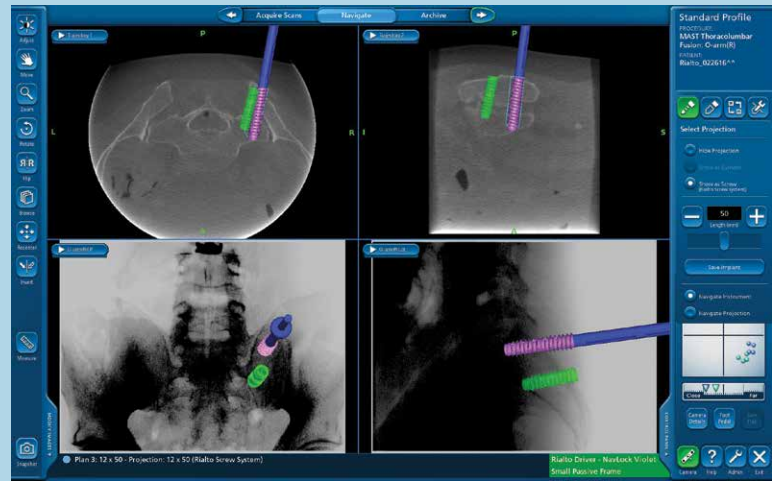
RIALTO SI FUSION SYSTEM IS COMPATIBLE WITH **POWER ENABLED, MINIMALLY INVASIVE, AND SURGICALLY NAVIGATED** PROCEDURES.



Power Enabled Procedure



Minimally Invasive Procedure



Navigated Procedure

WHICHEVER OPTION YOU CHOOSE

(minimally invasive or surgically navigated)

YOU WILL APPRECIATE OUR IMPLANT FEATURES.

- **Large fenestrations** for bone graft material
- **Large cannula** for pre-packing with autograft or an allograft such as Grafton DBM Putty mixed with BMA
- **Titanium Alloy** material
- **Wide thread pattern**
- **Multiple lengths** for varying anatomy

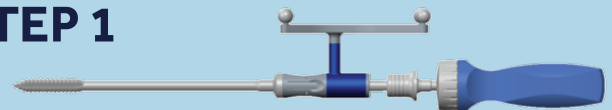


The Rialto SI Fusion System is designed for Sacroiliac Joint fusion and may also be used to provide fixation of large bones. One, two, or three devices may be placed, depending upon surgeon preference. Autograft and/or allograft may be placed in conjunction with the Rialto SI Fusion System.

TWO STEP INSERTION

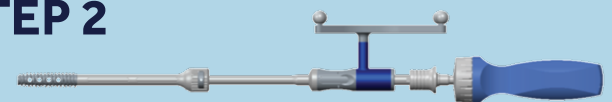
WE DESIGN OUR INSTRUMENTS TO ENHANCE YOUR EFFICIENCY. DRILL, TAP, AND PLACE THE IMPLANT IN TWO STEPS WITH NAVIGATED INSTRUMENTS.

STEP 1

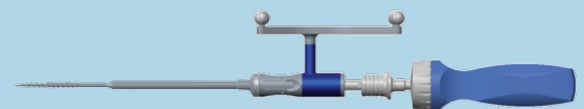


Navigated Rialto Awl Tip Tap

STEP 2



Navigated Driver



Optional Navigated Pilot Drill is available

Standard instrument set includes a Depth Stop for use with a manual drill and tap for better control.



Drill with Depth Stop



Tap with Depth Stop

IPC Powerease System is compatible with manual and navigated instruments.



PRODUCT ORDERING INFORMATION

Rialto SI Fusion System Implants (Sterile)

Part Number	Implant Description (Size)
74200001240	12mm × 40mm Threaded Device
74200001250	12mm × 50mm Threaded Device
74200001260	12mm × 60mm Threaded Device

Standard Surgical Instruments that may be used with Rialto SI Fusion System

Part Number	Instrument Description
7426000	Adjustment Driver
7426001	Depth Stop Assembly
7426002	8.6mm Drill
7426003	12mm Tap
7426004	T27 Threaded Driver
7426005	Funnel
7426006	Tamp
7426009	Rialto SI Fusion Graft Packing Fixture
7426010	Rialto SI Fusion Graft Packing Fixture Lid
G900000	1/4" Quick Connect Handle
G900100	1/4" Quick Connect T-Handle

Disposables, Sterile

(Not included in the instrument sets.)

Part Number	Instrument Description
7426007	2mm Guide Pin
7426008	2mm Trocar End Guide Pin
8670009	Beveled/Trocar PAK Needles
8670010	Beveled PAK Needles
8670015	Trocar PAK Needles

Navigated Surgical Instruments that may be used with the Rialto SI Fusion System

Part Number	Instrument Description
NAV7426000	Rialto Awl Tip Tap
NAV7426001	Driver
NAV7426002	Pilot Drill
7426005	Funnel
7426006	Tamp
7426009	Rialto SI Fusion Graft Packing Fixture
7426010	Rialto SI Fusion Graft Packing Fixture Lid



Grafton™ Demineralized Bone Matrix (DBM) Putty

Part Number	Description (Size)
T43101	Grafton Putty .5cc Jar
T43102	Grafton Putty 1cc Jar
T43103	Grafton Putty 2.5cc Jar
T43105	Grafton Putty 5cc Jar
T43110	Grafton Putty 10cc Jar

SUMMARY OF IMPORTANT PRODUCT INFORMATION ON THE RIALTO™ SI FUSION SYSTEM

PURPOSE

This device is a fusion device intended for stabilization and to promote bone fusion of the sacroiliac joint. The product should be implanted only by a physician thoroughly knowledgeable in the implant's material and surgical aspects and instructed as to its mechanical and material applications and limitations. This device is manufactured from medical grade titanium alloy and is provided sterile.

DESCRIPTION

The RIALTO™ SI Fusion System consists of cannulated devices of various widths and lengths used to provide stabilization when fusion of the sacroiliac joint is desired. Autograft and/or allograft may be placed in conjunction with the RIALTO™ SI Fusion System. This device may be implanted via a minimally invasive approach.

No warranties, express or implied, are made. Implied warranties of merchantability and fitness for a particular purpose or use are specifically excluded.

Never use titanium or titanium alloy implants with stainless steel in the same construct.

INDICATIONS

The RIALTO™ SI Fusion System is intended for sacroiliac joint fusion for conditions including sacroiliac joint disruptions and degenerative sacroiliitis.

Medtronic

Medtronic

Spinal and Biologics Business
Worldwide Headquarters

2600 Sofamor Danek Drive
Memphis, TN 38132



Medtronic Sofamor Danek USA, Inc.
1800 Pyramid Place
Memphis, TN 38132

(901) 396-3133
(800) 876-3133
Customer Service: (800) 933-2635

medtronic.com

Medtronic International Trading Sàrl

Case postale
Route du Molliau 31
CH-1131 Tolochenaz

Tel: +41 (0)21 802 70 00
Fax: +41 (0)21 802 79 00

medtronic.eu

Please see the package insert for the complete list of indications, warnings, precautions, and other important medical information.



Consult instructions for use at this website www.medtronic.com/manuals.

Note: Manuals can be viewed using a current version of any major internet browser. For best results, use Adobe Acrobat® Reader with the browser.